

BRIMFIELD

P O C K E T G U I D E

DEALER DIRECTORY & MAP




 **BRIMFIELD MAP**
Pages 12 & 13

 **SHOW OPENINGS**
Page 12

 **HOTELS/MOTELS**
Directions Page 11

 **SEARCH**
By Category Page 6

 **DEALER REGISTRATION**
Page 20

 **NEW ANTIQUE SHOP DIRECTORY. CT & MA**
Pages 18 & 19

When Brimfield Rode the Trolley - 1907
One of the big open cars awaits more passengers in Brimfield.
Note the competition is lounging on the left. Story on page 4.

Grandfather Clock Care - Page 17

May's Antique Market
600 Dealers in Antiques & Collectibles Only
Open Thursday 9AM See Show Map on Page 23

Antique Textiles Vintage Fashions Show & Sale
Opening Monday 9:30am - See ad Page 3

 400 Dealers in Antiques & Collectibles Only!
Open Tuesday 1pm, Sat. 8am
Email: brimfield1@aol.com • See our Ad on Page 3

HERTAN'S
Opening on Wednesday
at Noon See Ad Page 12

 **Brimfields Largest Show**
Opening Friday 6am • See Ad Page 12

2004 BRIMFIELD SHOW DATES
MAY 11 - 16 • JULY 6 - 11
SEPT 7 - 12

FARMINGTON ANTIQUES W E E K E N D



JUNE 12 & 13, 2004
SEPTEMBER 4 & 5, 2004

Saturday 8AM - 5PM Admission - \$10

Sunday 10AM - 5PM Admission - \$7

Outdoors & Under Tents

Farmington (CT) Polo Grounds

Exit 39 off I-84, 9 miles West of Hartford

www.farmington-antiques.com

PSMA

Farmington Antiques Weekend - The Jenkins Family

P.O. Box 580, Fishers, IN 46038 ♦ 317-598-0019

**ANTIQUE TEXTILES
VINTAGE FASHIONS
SHOW & SALE**



2004
MONDAYS
MAY 10
JULY 5
SEPT. 6

EARLY ADMISSION
9:30 AM
\$20
GENERAL ADMISSION
11:00 AM
\$5

PSMA
Professional
Show Manager's
Association, Inc.

ONE DAY • INDOORS • BRIMFIELD WEEK
vintagefashionandtextileshow.com

STURBRIDGE, MA



ANTIQUE SHOW

At the Sturbridge Host Hotel
Thursday During Brimfield Week
MAY 13, 2004
JULY 8, 2004

EARLY BUYERS: 1PM - 2PM ★ \$10.00
GENERAL ADMISSION: 2PM - 6PM ★ \$5.00

The Sturbridge Host Hotel is located 6 miles east of
Brimfield, MA ~ close enough for anyone serious
about **REAL ANTIQUES** and **AMERICANA**
to include on their visit to Brimfield.

NAN GURLEY

536 North Rd / Parsonfield, ME 04047
(207) 625-3577



Brimfield, MA
2004
One Day Shows

MAY 11 & 15

Tuesday 1PM - 5PM
Saturday 8AM - 1PM

July 6 & 10

Tuesday 1PM - 5PM
Saturday 8AM - 1PM

SEPTEMBER 7 & 11

Tuesday 1PM - 5PM
Saturday 8AM - 1PM

Tuesday Admission: \$5.00
Saturday Admission: FREE

**POSTCARD &
EPHEMERA CENTER**

May 8-15 • July 3-10 • Sept 4-11
9am - 6pm *except* Regular Show Days

ANTIQUES IN THE BARN

May 9, 10, 11 & 15 • July 4, 5, 6 & 10
Sept 5, 6, 7 & 11

Monday 9am - 5pm.

Tuesday and Saturday Show Hours

R.C. Bowen, Marilyn Johnson, Barbara Ladd,
Millicent Mali, Bob Moffatt, Eric Nebbia, Robert Richards,
Sally & Kris Van Den Bossche, Joy Wemyss

Catch us during set-up - Sunday 10am - 5pm

PSMA
Professional
Show Manager's
Association, Inc.

For Dealer Space & Information
Call: Colleen James

Email: brimfield1@aol.com
Call: (508) 754-4185 • (413) 245-9471

Dealers in Antiques & Collectibles Only!

When Brimfield Rode The Trolley

by Charles C. Robinson

It would be hard to imagine how different travel in Brimfield was in 1900 compared to today. The roads were primitive dirt ones with the occasional passage of a carriage or a farmer's wagon drawn by horses and perhaps a heavy wagon drawn by oxen. There were also the stagecoaches of the Palmer and Southbridge line that passed through with their teams of horses. All this changed when the electric trolley car came to Brimfield in 1907 brought there by the New Haven Railroad interests led by Charles S. Mellen, the railroad's president. It was no longer necessary to travel by the earlier slow cumbersome methods when the trolley car, propelled by electricity, could take passengers on a smooth road of steel rail in all kinds of weather. These trolley lines were often referred to as street railways or car lines.

In 1896, nearby Fiskdale had obtained a trolley line that connected it with Southbridge and by 1902, a second company completed a trolley line connecting Southbridge with Worcester. Around Palmer between 1898 and 1900 trolley lines were extended to Monson, Three Rivers, Bondsville and Ware. That company became the Springfield & Eastern Street Railway (S&E) in 1901 and that year completed another line to Ludlow with a connection to the Springfield Street Railway (Sp St Ry). Now Brimfield was in the center of a 14 mile trolley gap between Fiskdale and Palmer that would complete a route between Worcester and Springfield.

Charles Mellen, President of the New Haven Railroad, was convinced that the trolley lines provided an opportunity to obtain a transportation monopoly in Massachusetts. He caused the New Haven to buy in 1904 the Fiskdale to Worcester car lines and in 1905, the Sp St Ry that by then leased the S&E. Through his leadership the trolley gap through Brimfield was about to be filled.

In 1905, when the S&E attempted to obtain locations in Brimfield, they were opposed by the Hartford & Worcester Street Railway (H&W) that had obtained locations a few years earlier in Brimfield to build a trolley line between the cities in its name. Because of the slowness of the H&W to start construction, the Brimfield selectmen granted the S&E their locations and Mellen simply bought out the H&W to prevent further trouble.

Work started in May 1906 and within a short time a large steam shovel was digging its way up the sides of the hills from Palmer toward Brimfield. On May 10, 1907 the first test passenger car reached Brimfield heralded by ringing of the town bell and cheers from the students at Hitchcock Academy. By the end of June, the missing bridge at East Brimfield over the Quinebaug was in place and the line was formally opened on a most memorable day, July 1, when the parlor cars, Huguenot and Rockrimmon, arrived at the Brimfield Common with a party of distinguished guests from Springfield. The party stopped to pose for the famous scene along side the Rockrimmon and the Huguenot at the Common (page 4). The next leg of the trip to Worcester was somewhat marred by the Rockrimmon coming off the track on the outskirts of Southbridge. The party continued on the Huguenot for the remainder of the trip to Worcester.

The really big day for Brimfield was July 5 when the first car in public service left Springfield that morning and arrived at Brimfield at 8:40 AM. That car was

packed and practically everyone in town went for a trolley ride that day on the cars that followed. As the Palmer Journal aptly put it "It seemed as if the millennium had come." In a postcard to Mrs. Ellen Trow of Ashfield mailed that day, "A. L. B." wrote "This has been an eventful day. The cars started running as advertised this morning. We went down to Fiskdale this A. M. and over to Palmer this P.M. It don't seem possible now. It is a fine trip."

Cars arrived in Brimfield from Springfield bound for Worcester 40 minutes past the hour with those from Worcester arriving 50 minutes past the hour and hourly thereafter between 8 AM and before 10 PM. Additional cars connected Brimfield and Springfield between the longer distance runs. The fare to Worcester was 55 cents and to Springfield was 25 cents. The travel times to these cities were 2 hours and 15 minutes and one hour and 15 minutes respectively. Most of the travel was local and between towns on the car line. The conductor took the fares and the motorman up front operated the controller and the air brakes for the green cars with cream trim. For the summer, open cars were used but for the colder months closed cars were brought out. The street railway crews with 10 years experience were paid a wage of 25 cents/hour in 1908.

This completed the opening of the longest same-seat trolley ride in New England, a total of 58 miles over hill and dale from Worcester to Springfield. The Hampden-Worcester county line just west of Fiskdale divided the line between the Worcester Consolidated Street Railway to the east and the Sp St Ry to the west. The line was operated cooperatively as a unit by these two companies that were both controlled by New Haven interests.

One important service was the trolley express and freight service conducted by trolley cars that had an appearance of boxcars with windowed rounded ends like the passenger trolleys. This service expanded slowly from Springfield and reached Brimfield in 1908 after overcoming opposition in Palmer and by 1912 extended to Worcester. Old timers said the trolley offered the best express service the town ever had.

A trolley ride on the hourly scheduled cars between Worcester and Springfield took 3 and a half hours. To speed up the schedule the trolley companies instituted the Three Hour Limiteds using more luxurious cars with wide windows so the rider could enjoy the pleasant New England country side. These cars making the trip in three hours stopped only in the important towns between the cities. The two Limited cars starting simultaneously from the two cities would pass each other near Brimfield in the morning and in the afternoon. They arrived one after the other in the village around 10 AM and 4 PM. These Limiteds which ran only during the summer and early fall were extremely popular when they were first put on in 1909 but their patronage declined and they were discontinued in the fall of 1911.

The Boston & Albany Railroad agreed to an interchange with the trolley system at Palmer in 1909. Thus railroad freight cars loaded with coal and other commodities were hauled up the steep hill into Brimfield a few at a time by trolley locomotives that were converted snow plows. Some of the out bound were flat cars filled with logs. Brimfield was at last connected to the national rail network.

Continued on page 7



A group of businessmen, trolley company officials, and newspaper reporters pose for this photograph at the Brimfield Common on July 1, 1907. They were on a leisurely inspection trip between Springfield and Worcester on board the parlor cars Rockrimmon and Huguenot to celebrate the completion of the trolley line between the two cities a few days before the initiation of public service. These two cars were, respectively, from the Springfield Street Railway and the Worcester Consolidated Street Railway that were joint operators of the line between the cities.

L
D
G

L. Drew Gerard

Antique Delivery Service

888-886-6476 BEEPER • 561-212-7159 CELL

All calls returned in the evening

antiquedelivery@aol.com EMAIL

East Coast Deliveries

Vermont	Delaware
Maine	Maryland
New Hampshire	Virginia
New York	Washington DC
Pennsylvania (ALL)	Chicago Area
Northern Ohio	North Carolina
Northern Indiana	South Carolina
Connecticut	Alabama
Rhode Island	Georgia
Massachusetts	Florida
New Jersey	

Specializing in moving Antiques & Art

For Long Distance

Most Deliveries \$250-\$375 (First Piece). \$50 Each Additional Piece

Inquire for Short Distance Delivery

• **RELIABLE** • **INSURED** • **REFERENCES** •

27 Years of Moving Antique Furniture

Located on Route 20 at MAYS Parking Lot
May, July, September 2004

BRIMFIELD DEALER DIRECTORY

DEALER	SHOW	BOOTH
Packaging & Delivery Service		
Brimfield Post Office		
LDG Antique Delivery Service	MAYS	
Packaging Store	Midway	Road

Advertising & Displays



**J&J - Booth F23
Green Acres - Booth 908**

**Bringing Advertising,
Country and Kitchen Items**

(518) 587-1511

www.countryladyantiques.com
email: **CtryLady1@aol.com**

Architectural Emporium	Meadows	
Architectural Emporium	Collins	Street
Awsom Advertising	NE Motel	PA 16
Barnstable Stove Shop, Inc.	Meadows	14
Bernice Conn Antiques	Hertans	45
Bill & Joan Lennon	JJ	F 24/25
Carl Fila & Rob McElroy	MAYS	154
Country Lady Antiques	Green	908
Country Lady Antiques	JJ	F 23
Dudley Hill Antiques	MAYS	75
Eclectic Antiques	JJ	D 31
Ed Lyons Antiques	Hertans	79
Edward/Patricia Seidel	JJ	Brook 16/17
Fred Glogower	Quaker	L 10
Frederic Hartl	Hertans	116/116 D
Gerald Newman	HOTM	I 13
Hometown Antiques	NE Motel	23
Impact Collectibles	HOTM	B 6
John T. Pierce Antiques	Dealers	A 5
Kevin's Antiques	Dealers	A 63
L & M Antiques	JJ	G 22
Larkins Antiques	Quaker	116
Leon Jackson	MAYS	494
Mainely Paper Antiques	JJ	G 2
Mercantile Antiques	MAYS	628
Old Federal Shop	MAYS	525
Stonegate Antiques	JJ	G 33
Susan Walter-Antiques	HOTM	G-41
ThingsGoneBy.Com	Dealers	Pavillion
ThingsGoneBy.Com	JJ	E 7
ToyRoadAntiques	JJ	M 2
Turner Antiques	HOTM	J 18
Turner Antiques	BAN	Tent
Vincent D'Angelo	Dealers	C 157
Waynes Neon Clocks	Hertans	139/140
Window of Time Antiques	Dealers	B 93

African art

Saho African Arts	Crystal	Front
-------------------	---------	-------

American Art Pottery

Bob and Marge Rolls	Quaker	64
Crones Collectibles	BrimBarn	
Laurel Antiques of Maine	BrimBarn	Inside
Primarily Pottery	Quaker	L3-9
Showcase Antique Mall	Hertans	88
Twentieth Century Designs	Meadows	150

Americana



- Americana
- Advertising
- Folk Art

Where the Show Begins...

23 Sturbridge Rd. - Across St. Chris. Church
413-245-9836. Extended Hours.



"The Packing and Shipping Experts"

"I love it, but how would I get it home"

Located at Brimfield Antique Center • Toll Free 888-593-6683

Alley Antiques and Collectibles	JJ	M 03,33
Antiquities	Quaker	L4-5

DEALER	SHOW	BOOTH
Brimfield Trading Post	Green	801/802
Chelsea Hill Antiques	MAYS	425
Christopher Swift Antiques	MAYS	413
Country Squire Antiques	NE Motel	47-49
Cross Roads Antiques	MAYS	142
D & N Sandys	Dealers	Pavillion
D & N Sandys	JJ	C 31
Darwin D. Bearley Antiques	Shelton	F-8
Davidian-Americana	MAYS	270
Evelyn Andeen	Hertans	54
Ferguson & Darruda	MAYS	507
Grotheer	Dealers	C 170
Grotheer	MAYS	610
Hedgeworth Antiques	MAYS	519
Henry Stek/Setkiewicz Antiques	NE Motel	94
Images Past	NE Motel	92/93
Iron Gate Antiques	JJ	M 38
Jan & John Maggs Antiques	Dealers	P 9
Jan & John Maggs Antiques	MAYS	165
Jeff Bridgman Antiques	HOTM	J 3
John H. Marshall	MAYS	657
M & L Antiques	MAYS	534
M. Gosch Antiques	Quaker	35/36
Mary and Joshua Steenburgh	MAYS	
Mercantile Antiques	MAYS	628
Michael Mccue	MAYS	271
Old Cape Antiques	MAYS	441
Ough Antiques	JJ	F 28
Ough Antiques	HOTM	J 17
Park Antiques	MAYS	331
R & R Collectibles	Central	43
Red Rooster	MAYS	329
Robert Lloyd Inc.	Shelton	F 31-33
Robert Perry Antiques	Crystal	2
Rorkes Drift	JJ	P 6
Rorkes Drift	BAN	363/364
Smiths Antiques	Quaker	39
Stonehedge Antiques	JJ	E 5
Trimbles Tavern Antiques	Meadows	151

Architcehural & Garden

A Touch of Yesterday	JJ	Brook 20
Aardvark Antiques	MAYS	9192
Andrews Antiques	Quaker	55-56
Antiques & Reusables	JJ	B 33/34
Architectural Emporium	Meadows	
Architectural Emporium	Collins	Street
Architiques	Quaker	57-60
Barnstable Stove Shop, Inc.	Meadows	14
BE Sales	Shelton	B 42-45
Bob Withington Antiques	HOTM	E-tent
Christopher Swift Antiques	MAYS	413
Corey Daniels	HOTM	E Tent
D. Williams	Quaker	B-26
Dantiques-Hookn Pennies	Hertans	205
Dantiques-Hookn Pennies	Dealers	D 226
Diamond Street Antiques	Green	
Doris Dixon Antiques	Shelton	B 52/53
EuroPorts LLC	Central	15
Ferguson & Darruda	MAYS	507
Great Stuff by Paul	Hertans	b,c,d,e
Henry Stek/Setkiewicz Antiques	NE Motel	94
J & B Antiques	MAYS	115
J. Pasternak & Son Antiques	Meadows	31/32
Jack Adamson	Hertans	39
Jeffrey Greene Antiques	Quaker	139
Johnsons Garden and Bird Houses	NE Motel	253
Les Dumond Antiques	JJ	C 5
M. Gosch Antiques	Quaker	35/36
Marvin Gardens	Quaker	B14-B20
New England Architectural	Sturt S	On road
Nothing Definite	Quaker	80-81
Nothing Definite	Shelton	Driveway
Olde Good Things	MAYS	638
Olde Good Things	Dealers	C 146/47
Olde Good Things	Sturt N	
Olde Good Things	HOTM	A-40
Olde Good Things	JJ	B 22
One Stop Antiques Inc.	Meadows	179-184
Recycling the Past	Meadows Back Field	
Red Rooster	MAYS	329
Richard & Patricia Lewis	MAYS	376
Richmond Furniture Service	Hertans	97
Robert/Kathy/Michaela Baranowsky	JJ	B-2/B-11
Roche Clan Antiques	HOTM	C 1-3
Smith-Zukas Antiques	Hertans	8, 9
STU-ARTz	Quaker	100
Sydelle & Jay Livingston	HOTM	G 26
Sydelle & Jay Livingston	Dealers	D 251

DEALER	SHOW	BOOTH
The Cooperage		Quaker 69
The East West Trading Company		Midway 50/51/63
The Grange		Quaker B12-13
The Seawife		Meadows
The Sugarplum Antiques		JJ Brook 53,54
The Wood Witch of the East		Dealers D 264
Truck Stop Antiques		Green 3rd Row
WebWilson.com		JJ A 60
Worden Antiques and Art		Hertans 182

Art & Paintings

Art and Antiques	MAYS	504
Artfull Eye	Shelton	F 05
Bayberry Art & Antiques	JJ	A-21
Bob Korhn	MAYS	
Boston Antiques Coop. No. 1	HOTM	D-12
Bridges Over Time	Dealers	D 255
Carl L. Bosk	BAN	467
Chelsea Hill Antiques	MAYS	425
Crones Collectibles	BrimBarn	
Dan & Nancys Antiques	BrimBarn Front Cent	
Diamond Street Antiques	Green	
Dot Lawrence Antiques	MAYS	658
Dot Lawrence Antiques	BAN	11 T
Elegant Artifacts	MAYS	516
Elm City Antiques	Midway	4
Fletcher Gallery	NE Motel	221
Forgotten Furnishings	MAYS	27
Gary Avadanian	Stephen	
Hentschel - Antik	MAYS	380
Hey-Day Antiques	Midway	4
James Rickard Antiques	MAYS	10
Janis Petrovich	BrimBarn	In Mid L
Jennings & Rohn Antiques	HOTM	E- Tent
Joe Torre	NE Motel	Front
Larry Stowell Antiques	NE Motel	113
Michael Smith	MAYS	85
Misery Island Sporting Collectibles	Stephen	
Mountain Rugs	NE Motel	29
Munro Studios	Quaker	7
Northumbria	Dealers	B 98
Northumbria	MAYS	184
Ooh Aah Antiques	MAYS	508
Ooh Aah Antiques	Shelton	F-9
Patricia A. Vaillancourt	BAN	Pavillion
Patricia A. Vaillancourt	HOTM	I 14
Peace Antiques	NE Motel	223
Peter Wilkinson Jacobs	MAYS	55
Peter Wilkinson Jacobs	BrimBarn	
Robert Perry Antiques	Crystal	2
Sold By Sue Wearsch	Shelton	B 14
Somebodys Antiques	NE Motel	218
Susan Walter-Antiques	HOTM	G-41
Swan Antiques	HOTM	E- Tent
The Griffins Gallery	HOTM	D 10
Tradewinds Fine Art	HOTM	A-39
Trimbles Tavern Antiques	Meadows	151

Art Glass

A & R Studios Stained Glass	Sturt N	Rt. 20
Black Swan	Midway	5
Dan & Nancys Antiques	BrimBarn Front Cent	
GlimmerGlass Antiques	JJ	C 29
Greg Huber	NE Motel	R 5,6
J. Pasternak & Son Antiques	Meadows	31/32
JSD Antiques	BrimBarn	Inside

Baskets & Woodenware

Great Stuff by Paul	Hertans	b,c,d,e
Nightingales Antiques	Central	20

Black Americana

Kirsch Antiques	NE Motel	196 & 210
Pennys & Cents Antiques	JJ	Last Row
Stonegate Antiques	JJ	G 33

Black Memorabilia

Dianes Antiques	MAYS	56
-----------------	------	----

Books & Manuscripts

The Miller's Daughter

REFERENCE BOOKS
ON ART, ANTIQUES AND COLLECTIBLES

J&J BOOTH G24

Toll Free 1-877-829-9114 · email david@earthlink.net

Another event was the Trolley Farming Special, a joint effort between the New Haven trolley companies and the Massachusetts Agricultural College of Amherst (later University of Massachusetts.) Four cars with exhibits on new farming techniques along with some of the college staff who would present lectures on farm topics visited various towns along the trolley lines. The Special came to Brimfield on April 16, 1910. For the dairy demonstration a cow was borrowed from a farmer. Charles Tarbell, a prominent town resident, permitted a demonstration of tree pruning and spraying on his premises.

Heavy snowstorms would occasionally tie up the trolley line for days. A particularly vicious blizzard on February 5, 1920 followed by other storms succeeded in blocking the Worcester-Springfield line between Southbridge and Brimfield for 39 days. Even the service between Brimfield and Palmer ran only for a few widely spaced days during this period when additional storms would deposit snow followed by a thaw and a quick freeze producing thick ice that completely blocked the tracks. Three times volunteers from the town joined the street railway men to clear the line only to have it close the next day because of a storm. Only the return of Spring eventually freed the tracks and cars started running once again through Brimfield on the way to Springfield and Worcester on March 15. At the end of July 1924, the last bad section in the road between Fiskdale and Brimfield was paved and thrown open. The amount of vehicle traffic rose rapidly on that highway and included a competing bus line between Springfield and Providence.

With declining riders, the trolley company reduced the frequency of the cars in 1925 from the former hourly service to a car once every two hours and required a car change at Palmer for the remainder of a trip.

By March 1927, the New Haven announced the Worcester-Springfield rail line would be discontinued as soon as buses could be obtained to replace the electric cars. The end came August 14, 1927 when the last car rolled into Brimfield stopping a final time and then proceeding into history. Thus ended the trolley running between the two principal cities of Central Massachusetts after only 20 years of operation. Trolley company buses took over the next day. Transportation in Brimfield had gone from the horse and buggy to the private auto, the bus and the truck on hard surface all weather roads in this length of time.

The author, a former resident of Sturbridge, is completing a book on the Worcester to Springfield trolley line and hopes to have it published soon. If someone has old photos or other information on the trolley line that would be useful for the book, please contact Charles C. Robinson; 101 Brentwood Lane; Fairport, NY 14450; 585-377-4245. Arrangements can be made to have copies made without loaning the materials. Also please contact the author if you would like to put your name on a mailing list to be notified when the book is available.



Trolley tracks along route 20, circa 1907, where the Brimfield Shows are held today.



A car passes through the jagged edges of Dion Cut just off Five Bridges Road in Brimfield.

THE BIG ONE



**Saturday
October 16
10 a.m. - 7 p.m.**
**& Sunday
October 17
10 a.m. - 5 p.m.**

ATLANTIC CITY
CONVENTION CENTER
ATLANTIC CITY, NJ

Call **1-800-526-2724** or visit
www.atlantiquecity.com

for **FREE** dealer information or to
order tickets in advance and get:

- **FREE** shuttle service
- Early Show Entry on Saturday
- Discount tickets
- **FREE** Furniture Delivery within
200 miles (charge for protective packaging & insurance)
- Discounts on airfare & lodging

"The antiques capital of the world." —CHICAGO SUN TIMES



"A truly impressive combination of fine art, quality
antiques and fun collectibles....It's worth the trip."
—SAN FRANCISCO EXAMINER



"100,000 visitors hike over 10½ acres bursting
with a staggering variety of offerings. The world's
largest might be an understatement." —WASHINGTON POST

10+ ACRES OF: FORMAL & COUNTRY FURNITURE • AMERICANA
DOLLS • EPHEMERA • TOYS • ADVERTISING • CHINA • BRONZES
FOLK ART • PAINTINGS • DECOYS • PEWTER • DEPRESSION GLASS
SILVER • CRYSTAL • ORIENTALIA • RUGS • ANIMATION ART • CLOCKS
QUILTS • LAMPS • BOTTLES • PORCELAIN • ART DECO • MUSIC
POTTERY • JUKEBOXES • BANKS • JEWELRY • AND MORE!

"Go and let yourself be dazzled." —PHILADELPHIA INQUIRER

BRIMFIELD DEALER DIRECTORY

DEALER	SHOW	BOOTH	DEALER	SHOW	BOOTH	DEALER	SHOW	BOOTH
C & R Antiques	Central	99	Hedgeworth Antiques	MAYS	519	Bayberry Art & Antiques	JJ	A-21
Cartophilian Collectibles	BAN	Inside	Joyce Charbonneau	JJ	Brook 23	Brownstead Antiques	Hertans	115
Childrens Book Nook	Quaker	68/69	judycentille.com	Central	100	Class Menagerie	Hertans	40
Glens Cards	Central	92	Ken Farrar	MAYS	506	Classic Junque	MAYS	54
History Gallery	Hertans	55	Mori Books	JJ	C-33	Country Lady Antiques	Green	908
House of Hubbard	Quaker	30	Ray/Joan Peterson Antiques	JJ	N 32	Country Lady Antiques	JJ	F 23
M.A. Storck Company	MAYS	163	Shelly Smith/Tory Beth Radwick	Central	121	Davidian-Americana	MAYS	270
Mori Books	JJ	C-33	The Closetful	Central	68, 46	DeBears & Monkees	Green	Main Aisle
Richard F. Murphy Jr. Books	MAYS	178	Trillium Antiques	NE Motel	P19	EuroPorts LLC	Central	15
Rorkes Drift	JJ	P 6	Turner Antiques	HOTM	J 18	Evelyn Andeen	Hertans	54
Rorkes Drift	BAN	363/364	Turner Antiques	BAN	Tent	Hartmann House Antiques	HOTM	G 10
The East West Trading Company	Midway	50/51/63	Civil War			Hartmann House Antiques	JJ	Brook 9
The Gryphons Nest	Shelton	F-1	Antiques & Artifacts	Hertans	172	Hometown Antiques	NE Motel	23
The Millers Daughter	JJ	G 24	D & R Antiques	JJ	A 31	Jack Adamson	Hertans	39
William D. Johnson Antiques	JJ	Brook 37	David Charron	MAYS	394	James Rickard Antiques	MAYS	105
Bottles			Iron Gate Antiques	JJ	M 38	Lone Ranger Antiques	Quaker	104/10
Bernice Conn Antiques	Hertans	45	Jerry Greenstein	MAYS	253	Martha Perkins	BAN	121
Bitters Bottles	JJ	E 28/29	Rob & Ruth Lyon	JJ	E 22	Martha Perkins	MAYS	156
Cobalt Turtle Antiques	JJ	E 12/13	Trimbles Tavern Antiques	Meadows	151	Mason Dixon Memories	Quaker	13-14
Larkins Antiques	Quaker	116	Clocks & Watches			Meissners Auction Service	BAN	86
Robert Lanagan	Green	104	Antiques & Reusables	JJ	B 33/34	Meissners Auction Service	Hertans	9192
The Re-Run Shop	Quaker	70	Artifacts	JJ	P 40	Michael Mccue	MAYS	271
Brass/Copper/Bronze			Artifacts	HOTM	F 110	Mixing Bowl Antiques	NE Motel	M 7
Country Brass	NE Motel	46	Awsom Advertising	JJ	P 40	Mount Vernon Antiques	HOTM	C 31
Images Past	NE Motel	92/93	Bench Jeweler-A Sterling Idea	HOTM	F 110	Mount Vernon Antiques	Dealers	D 272
Kay Bakers Antiques	MAYS	84	Bill-Lil Antiques	NE Motel	PA 16	Mountain Niche Antiques	Hertans	21
Malcolm Reiss	MAYS	24	Ed Finney Antiques	MAYS	492	Nothing Definite	Quaker	80-81
NE Brass Refinishing/Campello Ant	NE Motel	68 A-B	Goldsmith Jewelers	NE Motel	1-2	Nothing Definite	Shelton	Driveway
Rowfant Antiques	MAYS	77	Greenhouse Antiques	MAYS	362	Now & Then	BAN	Tent
Rubleys Antiques	Dealers	A 67	Hermitage Antiques	Crystal	5	Oak Barrel Antiques	Midway	8
Rubleys Antiques	BAN	338	Jim Brady Antiques	JJ	A 12	Old Cape Antiques	MAYS	441
Sir Richards Antiques	JJ	A6	Karys Gold & Silver	MAYS	126	Pattis Antiques & Treasures	Meadows	143/144
Breweriana			M&M	Mahogany	36	Picture Window Antiques	Quaker	B 18
John T. Pierce Antiques	Dealers	A 5	R & R Collectibles	Crystal	98	Presence From The Past Antiques	JJ	A62
Mary Fazzino	Quaker	28	Robert DeLuca Antiques	Hertans	98	Richard Fuller Antiques	MAYS	475
Orange Trading Company	Green	Left Rear	Waynes Neon Clocks	Central	43	Shoe Rack Lady	MAYS	397
Buttons & Smalls			Window of Time Antiques	JJ	M-40	Shoe Rack Lady	BAN	546
Almeida Enterprises	Shelton	F 29	Coin Op & Mechanical	Hertans	139/140	The Masons	Central	3
Bennett Antiques	JJ	Fence 6	Antiques & Tyme	Dealers	B 93	The Scottish Trader	Quaker	112-122
C & R Antiques	Central	99	Antiques & Tyme	MAYS	174	The Wood Witch of the East	Dealers	D 264
Donna Buccelli	NE Motel	61	Galligans Antiques	BAN	78	TransAmerican Antiques	NE Motel	17
Judith Clarke	Collins		John Apple	Sturt S		Village Green Antiques	Green	Main Row
judycentille.com	Central	100	Mercantile Antiques	NE Motel	R 5,6	Wiggletown	NE Motel	197
Kristine Tibbetts	Central	45	Orange Trading Company	Hertans	24	Deco & Decorative Arts		
MFM	Dealers	P 15	Waynes Neon Clocks	MAYS	628	A Touch of Yesterday	JJ	Brook 20
Patricia Kosmoski	Quaker	115	Coins	Green	VT Tent	Antique/Decorating Wherehouse	NE Motel	P 8-12
Patricia Wagner	Shelton	M 16	Blair Collectibles	BAN	Inside	Antiques and Accents	MAYS	63
Susan Gower	Central	116	Gray Collectibles and Supplies	MAYS	163	Antiques and Accents	HOTM	E 8
The Toy Boy	Midway	19	M.A. Storck Company	MAYS	24	BAK on ONE Wells	Dealers	A 14
Wildflowers Antiques	JJ	A 63/64	Malcolm Reiss	Quaker	29	Black Swan	Midway	5
Woodland Farms Antiques	HOTM	B 22	Show Car Tags	Shelton	F-1	Darwin D. Bearley Antiques	Shelton	F-8
Woodwards Antiques	Meadows	83/84	The Gryphons Nest			EuroPorts Home & Garden	NE Motel	91
Cameras			Comic			Fancy That Antiques	Francesco	F 1
Eighty One Antiques	Stephen		Plymouth Rock Toy Co.	JJ	P 2-3	Grey Goose Antiques	Central	2
Cast Iron			Costume Jewelry			Smith-Zukas Antiques	Hertans	8, 9
Antique Coffee Mills	Hertans	195	B & B Antiques	Midway	Inside	Sydelle & Jay Livingston	HOTM	G 26
Antiques and Accents	MAYS	63	Bench Jeweler-A Sterling Idea	MAYS	492	Sydelle & Jay Livingston	Dealers	D 251
Antiques and Accents	HOTM	E 8	Blackbird Antiques	HOTM	G 01	Twentieth Century Designs	Meadows	150
Baileys Anitques	Quaker	40	Christinas Antiques & Jewelry	Midway	45	Walkers Collectibles	Dealers	P 16
BE Sales	Shelton	B 42-45	Diana Smires Jewelry	Shelton	M 48	Walkers Collectibles	JJ	M 44
Bear Creek Trading Company	Quaker	B 5-6	George Briggs	MAYS	654	West St. Station	Quaker	22
Doris Dixon Antiques	Shelton	B 52/53	Grannys This & That	Collins	3	Woodwards Antiques	Meadows	83/84
Impact Collectibles	HOTM	B 6	Judith Clarke	Collins		Decoys		
Lilac House Antiques/Galleries	BrimBarn	On road	Kendall Antiques	Collins		Gary Advanian	Stephen	
Marvin Gardens	Quaker	B14-B20	Laurel Antiques of Maine	Crystal	5	Malchione Antiques/Sporting	JJ	J 4
Showcase Antique Mall	Hertans	88	Leda Roberts	BrimBarn	Inside	Malchione Antiques/Sporting	HOTM	D 2
Stephen Moss	HOTM	E 8	Mid Century Chic	MAYS	503	Dolls & Accessories		
Stephen Moss	MAYS	63	Patricia Kosmoski	Meadows	172/173	Art For Life	MAYS	97
Sunset Antiques	JJ	F 12	Pittsburgh Antique Mall	Quaker	115	Bay State Antiques	Hertans	66
Weather or Knot Antiques	Midway	46, 59	Sandra McNeil Antiques	JJ	C-12	Brantiques	Quaker	70 & 76
Ceramics			Somebodys Antiques	Sturt N		Brass Lantern Antiques	Dealers	C 172
Dennis & Dad Antiques	MAYS	393	Terez Vintage Costume Jewelry	NE Motel	218	Dover Doll Clinic	MAYS	11
Eclectic Antiques	JJ	D 31	The Green Mannequin	Dealers	Pavilion	Hasbeens	MAYS	539
Lauras Dollhouses & Collectibles	Central	3 B	Vintage Revival	Quaker	53	Ken Farrar	MAYS	506
Michael/Claire Higgins Antiques	MAYS	457	Country	Sturt S		McQuillin Antiques & Collectibles	Shelton	B 03
Michael/Claire Higgins Antiques	HOTM	A 11	Alley Antiques and Collectibles	NE Motel	M 03,33	Mikes & Gayles Toys & Joys	Central	106
Poor Warrens Antiques	Hertans	75	Anne Negrin Antiques	Dealers	R 36/37/38	Old Threads Antique Textiles	Crystal	Front
William D. Johnson Antiques	JJ	Brook 37	Antiques & Tyme	Quaker	78	Patricia A. Vaillancourt	BAN	Pavilion
Childrens Items			Antiques & Tyme	Sturt S	53	Patricia A. Vaillancourt	HOTM	I 14
Childrens Book Nook	Quaker	68/69	Antiques on the Common			Shelly Smith/Tory Beth Radwick	Central	121
Cross Century Antiques	Quaker	8	BAK on ONE Wells			Eclectic		
			Bakers Antiques			Almeida Enterprises	Shelton	F 29
						Architiques	Quaker	57-60
						Bunnys Place	JJ	F 1
						Cathys Corner	Quaker	B 15/16
						D. Williams	Quaker	B-26

BRIMFIELD DEALER DIRECTORY

DEALER	SHOW	BOOTH
Blackbird Antiques	HOTM	G 01
Central Market Antiques	Midway	2
Country Squire Antiques	NE Motel	47-49
Decoartique	BAN	
Diamond Street Antiques	Green	
Forgotten Furnishings	MAYS	27
Grotheer	Dealers	C 170
Grotheer	MAYS	610
Hermitage Antiques	MAYS	126
Hiawatha Country Woodshop	Quaker	94
Hoffmans Antiques	Quaker	84
Jan & John Maggs Antiques	Dealers	P 9
Jan & John Maggs Antiques	MAYS	165
Joyce Antiques	NE Motel	245
Lone Ranger Antiques	Quaker	104/105
One Stop Antiques Inc.	Meadows	179-184
Oxus River Gallery	Sturt N	Main Rd
Peppercricket Farm	JJ	Brook 10
Quaboag Valley Antiques Center	JJ	Brook 1-3
R.J. Nichols Auction Co.	MAYS	555
Randall Davis Antiques	Mahogany	20-21
Spinning Wheel Antiques	Stephen	Tent
The Dusty Shelf	MAYS	74
The Peddlers Chest	JJ	Brook 4
The Seawife	Meadows	
Turnpike Antiques	Hertans	117
Village Green Antiques	Green	Main Row
Worden Antiques and Art	Hertans	182

Furniture English/Euro



FREE Pickup of larger items

FLAV™

"Fragile, Large, Awkward or Valuable"™

Located at Brimfield Antique Center • Toll Free 888-593-6683

American Eagle Antiques	Central	36
Antiques	BAN	
Antiques & Reusables	JJ	B 33/34
Bob Withington Antiques	HOTM	E-tent
Christopher Swift Antiques	MAYS	413
Decoartique	BAN	
EuroPorts Home & Garden	NE Motel	91
Heritage Gallery	BrimBarn	Inside
House of Windsor Exports	Hertans	44/45
House of Windsor Exports	Shelton	B 17
Martell & Suffin Antiques	Dealers	C 181
Martell & Suffin Antiques	HOTM	F 50
Randall Davis Antiques	Mahogany	20/21

Furniture Oak

American Eagle Antiques	Central	36
Andrew Hasselberg	Crystal	
Brass Lantern Antiques	Dealers	C 172
Central Market Antiques	Midway	2
Cote Auction	Meadows	312
Cote Auction	MAYS	665
Fragile Beauty Antiques	NE Motel	219
J & B Antiques	MAYS	115
John Elliot Antiques	Central	31
Johns Antiques	MAYS	119

DEALER	SHOW	BOOTH
Kirsch Antiques	NE Motel	196 & 210
Pattis Antiques & Treasures	Meadows	143/144
Snooty Fox Antiques	NE Motel	8
Spinning Wheel Antiques	Stephen	Tent
Stoneware John	Midway	5
Toma Golden Antiques	NE Motel	PA 3
Wilbraham Mountain Antiques	Quaker	49
Wynns Antiques	NE Motel	69/70

Furniture Painted

Andrew Hasselberg	Crystal	
Bettina Krainin	Hertans	146
Cabinetworks of Butternut Hollow	Meadows	11
Clark Farm Antiques	JJ	A 14
Davidian-Americana	MAYS	270
Doris Dixon Antiques	Shelton	B 52/53
Double G Farms Antiques	JJ	J21
EuroPorts Home & Garden	NE Motel	91
Furniture de Charme	Francesco	Road
Hiawatha Country Woodshop	Quaker	94
Jeff Bridgman Antiques	HOTM	J 3
Juniper Hill Antiques	Stephen	Fr Tent Rd
Lightning Colors	Quaker	B 8
Oxus River Gallery	Sturt N	Main Rd
Randall Davis Antiques	Mahogany	20-21
Swierads Antiques	Central	8
The Masons	Central	3
Vintage Pastelle	NE Motel	303A

Furniture Period

Andrews Antiques	Quaker	55-56
Antiques	BAN	
Brimfield Trading Post	Green	801/802-
901/902		
Cabinetworks of Butternut Hollow	Meadows	11
Corey Daniels	HOTM	E Tent
Decoartique	BAN	
Easter Hill Antiques	Dealers	A-35
Jan & John Maggs Antiques	Dealers	P 9
Jan & John Maggs Antiques	MAYS	165
Martell & Suffin Antiques	Dealers	C 181
Martell & Suffin Antiques	HOTM	F 50
Michael/Claire Higgins Antiques	MAYS	457
Michael/Claire Higgins Antiques	HOTM	A 11
Plum Blossom Antiques	NE Motel	52, 53
Robert DeLuca Antiques	JJ	M-40
The Kings Row Antique Center	Hertans	2
Toma Golden Antiques	NE Motel	PA 3
Wynns Antiques	NE Motel	69-70

Furniture Victorian



Fully licensed and insured Professional Service.

Packing, Crating and Delivery Services

Located at Brimfield Antique Center • Toll Free 888-593-6683

American Eagle Antiques	Central	36
Quaboag Valley Antiques Center	JJ	Brook 1-3
Rubleys Antiques	Dealers	A 67
Rubleys Antiques	BAN	338

DEALER	SHOW	BOOTH
Seagull Antiques	MAYS	445
Toma Golden Antiques	NE Motel	PA 3
Webber Antiques	BAN	273
Webber Antiques	Central	56/57
Wilbraham Mountain Antiques	Quaker	49
Wynns Antiques	NE Motel	69/70

Games, Toys & Trains

20th Century Objex	MAYS	414
20th Century Objex	BAN	23
All Collectors.com, Inc.	MeadowsRoad	33/34
Amazing Antiques	Quaker	118
Antiques by Barbara	JJ	K 7
Bill-Lil Antiques	NE Motel	1-2
Dianes Antiques	MAYS	56
Dudley Hill Antiques	MAYS	75
Ed Lyons Antiques	Hertans	79
Elmwood Antiques	Central	126
Impact Collectibles	HOTM	B 6
James Jackson	MAYS	88
Johns Iron Garden	Collins	Outside Tent
Joseph McGaughey	MAYS	402
Ken Farrar	MAYS	506
Kevin Antiques	Dealers	A 63
L & M Furniture	Crystal	6
M & L Antiques	MAYS	534
Mikes & Gayles Toys & Joys	Central	106
Past Times Antiques	NE Motel	24
Plymouth Rock Toy Co.	JJ	P 2-3
The Sultan of Swap	Sturt N	
The Toy Boy	Midway	19
Turner Antiques	HOTM	J 18
Turner Antiques	BAN	Tent
Wings & Wheels Collectibles	JJ	B-3

General Line

A.T. Roches	Quaker	97-98
Almeida Enterprises	Shelton	F 29
Annas Antiques	MAYS	249
Annas Antiques	Hertans	34, 35, 36
Antiques by Barbara	JJ	K 7
Artfull Eye	Shelton	F 05
Back From The Past Antiques	NE Motel	R-3
Bernice Conn Antiques	Hertans	45
Black Run Antiques	Central	129
Boston Antiques Coop. No. 1	HOTM	D-12
Colleen Vagnini Antiques	Midway	46, 59
Dianes Antiques	MAYS	56
Eighty One Antiques	Stephen	
Eileen Love	NE Motel	225/225A
Gary Avadanian	Stephen	
Jim Stubblefield Antiques	Hertans	200
John Wirkkala	Hertans	41
L & M Furniture	Crystal	6
Main Street Antiques	Green	Back R Cnr
McQuillin Antiques/Collectibles	Shelton	B 03
Mike Wilson Antiques	Green	VT Tent
Millers Antiques	MAYS	452
Moody's Collectibles	JJ	L 3
Nan Gurley Antique Shows	Antique Shows	
Past Times Antiques	NE Motel	24
Pittsburgh Antique Mall	JJ	C-12
R.J. Nichols Auction Co.	MAYS	555
Ray & Joan Peterson Antiques	JJ	N 32
Smiths Antiques	Quaker	39
Stephen Moss	HOTM	E 8

A



CHARLTON Flea Market & Antiques

Trolley Crossing

Junction of Routes 20 & 31 So., Charlton, MA

OPEN YEAR ROUND • RAIN OR SHINE • INSIDE OR OUTSIDE

FREE ADMISSION SATURDAY 7AM - 3PM — SUNDAY 7AM - 4PM

C.E.M. SELF STORAGE

SIZES			
5 x 5	5 x 10	15 x 15	
10 x 10	10 x 15	10 x 20	10 x 30

AUCTIONS STARTING APRIL 17 • 2PM EVERY SATURDAY

Call 508-248-5690 or visit our website
www.CharltonFlea.com

B



Hours: Tues - Sat 9-5 • Sunday 12-5

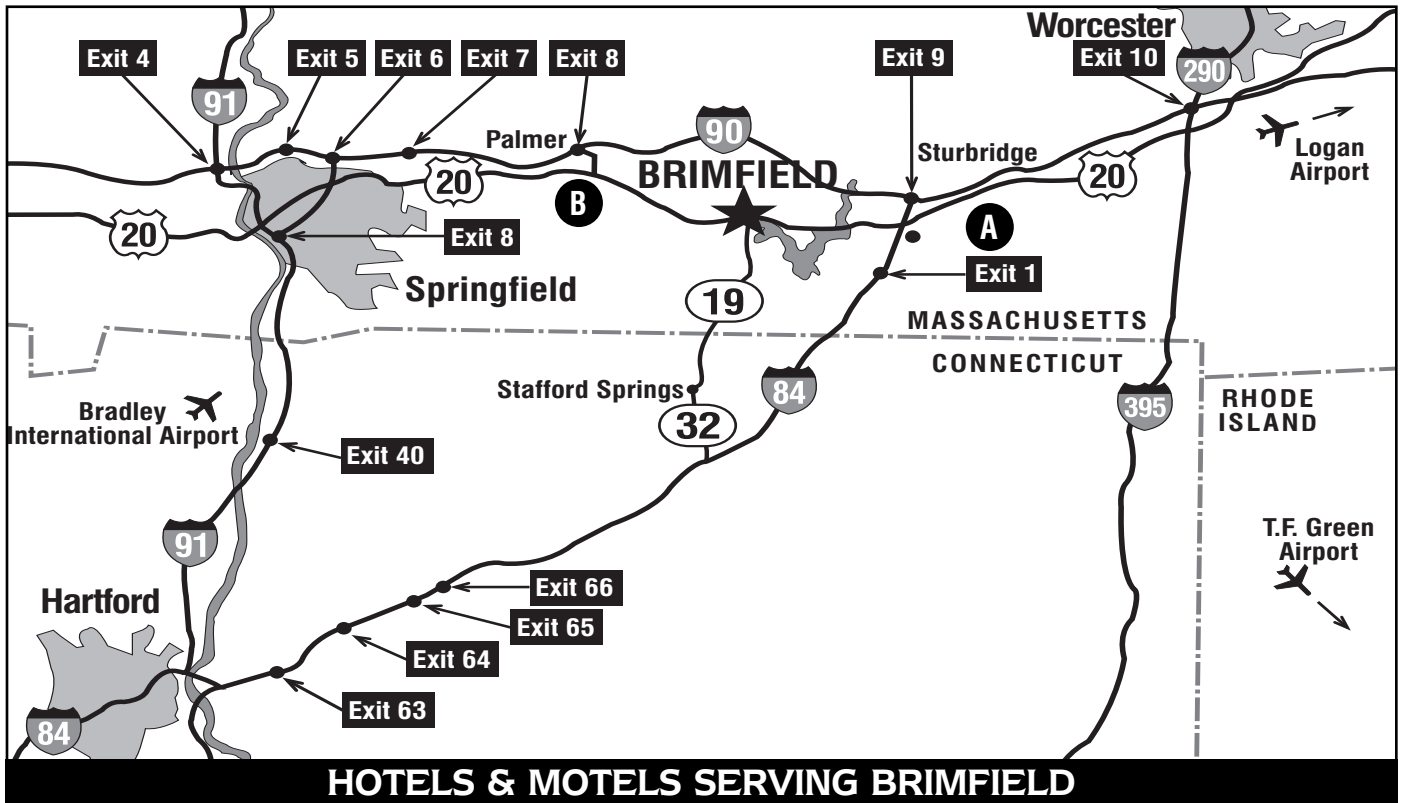
Open the Monday of Brimfield Week
with Extended Brimfield Hours

QUABOAG VALLEY ANTIQUE CENTER

Exit 8 (Palmer) • Corner Main St. (Rt 20) and Knox.
Approximately 7 miles West of Brimfield on Rt. 20

12,000 Square Feet of Antiques

10 KNOX STREET • PALMER, MA • 01069 • (413) 283-3091
www.quaboagantiques.com



HOTELS & MOTELS SERVING BRIMFIELD

CHICOPEE, MA

Park Inn Exit 5, I-90, Bear Right, 1/4 mile on right, 450 Memorial Drive, 413-739-7311, (800-670-7275 Nat.) www.parkinn.com

Hampton Inn Exit 5, I-90, Rte.33(Memorial Drive) North 2 traffic lights, U-turn hotel 2nd right, 600 Memorial Drive, 413-593-1500 www.chicopee.hamptoninn.com

LUDLOW, MA

Comfort Inn & Suites Exit 7, I-90, Left at light on Center Street, 1/4 mile on Right. www.comfortinn.com/hotel.ma116 413-589-0488

SPENCER, MA

The Red Maple Inn Exit 9, I-90, US 20 E (2 mi) to 49 N (7.5 mi) to 9 E (2 mi on left) www.theredmapleinn.com 508-885-9205

SPRINGFIELD

Country Inn & Tavern 339 Boston Road, Springfield, MA 01109 From Brimfield Center, 19 miles west on US Route 20. Call 413-783-1691

Howard Johnson Express Exit 7, I-90, Rt. 21 S, to Rt. 20 W, 1356 Boston Rd., 413-2783-2111 www.howardjohnsonspringfieldma.com

STURBRIDGE, MA

Hampton Inn Exit 9, I-90 Left at first set of lights onto Rt. 131. Hotel .25 miles on left, 328 Main Street, 508-347-6466 www.Hamptoninn-sturbridgema.com

Sturbridge Quality Inn & Conf. Cntr. Exit 1, I-84, 400 Haynes Rd., Route 15 behind Sturbridge Isle, 508-347-1978 www.sturbridgequalityinn.com

Sturbridge Host Hotel Exit 9, I-90, to Rt. 20 west, .5 miles on right, 366 Main Street, 800-582-3232 Full service hotel www.sturbridgehosthotel.com

VERNON, CT

Comfort Inn Exit 65, I-84, Right 1/4 mile on left, 425 Hartford Tpke. 800-235-4667 or 860-871-2432 www.comfortinnvernon.com

Holiday Inn Express Exit 64, I-84, 346 Kelly Rd., 860-648-2000 Email: Lehoferdarlene@aol.com www.HIEXPRESS.COM/vernonct

Quality Inn Exit 63, I-84 East, Left 1 mile on left, Exit 63, I-84 West, Right, 1 Mile on left, 51 Hartford Tpke., 800-235-4667 or 860-646-5700 www.qualityinnvernon.com

WEST SPRINGFIELD, MA

Super 8 Motel Exit 4, I-90, Route 5 S, 1/2 m on right. I-91Exit 13A, Route 5 N, 1/2 m on left 1500 Riverdale Street, 413-736-8080 www.super8.com

This list of Hotels & Motels are paid by advertisers who would appreciate your Business. Pricing arrangements are not determined or influenced by BrimfieldExchange

DIRECTIONS TO BRIMFIELD

From the East: Boston, Providence and Worcester From Boston and points east take the Mass Turnpike (Rt. 90) west to Exit 9 (Sturbridge). Follow Route 20 west to Brimfield, about 7 miles to the only set of traffic lights. From the lights in Brimfield center, continue west. The markets begin just after the big white church on the right. BrimfieldExchange is located in our show booth, about 0.4 miles on the left (South) side of Route 20, opposite May's Antique Market, and between J & J and Herten's. Paid parking is available along route 20 on both sides of the road. The Brimfield antique shows (markets) extend about 1 mile west of the church along route 20.

From the West: Albany and Springfield From Springfield and points west take the Mass Turnpike (Rt. 90) east to exit 8 (Palmer). After exiting the toll, turn right on route 32 south. Proceed 0.6 miles to next set of lights in Palmer. From the lights turn left on route 20 east toward Brimfield, and proceed about 6.8 miles to the end of the divided highway. The markets(shows) begin at a little over 7.0 miles and extend east for about a mile. BrimfieldExchange is located in our show booth, about 7.8 miles on the right (South) side of Route 20, opposite May's Antique Market, and between J & J and Herten's. Paid parking is available along route 20 on both sides of the road.

From the South: NYC and Hartford Take route I-95 north to New Haven, then 91 north to Hartford. Pick up I-84 east in Hartford. Follow I-84 east to the Sturbridge exit for route 20 west, or from I-84 follow route 32 north to route 19 north to Brimfield light and turn left (west). From here follow east directions above.

Old Postcards

& PAPER COLLECTIBLES OF ALL KINDS

Indoors at

The Postcard & Ephemera Center

Brimfield Acres North Field

Look for the Large Red Building fronting on Rt. 20

We open Friday May 7TH - 9AM to 6PM

and are open Every Day through Saturday May 15TH

For dealer Info contact: cartophilians@cox.net

Phone/Fax: (203) 272-1143

How Can I get It Home Safely & Economically?

Located @ Brimfield Antiques Center

We Provide:

- Custom Packaging & Shipping
- Van Line Service
- Foam-in-place Packaging
- Insurance
- Domestic & International Shipping
- Custom Crating
- Packaging Materials
- Field Pick Up



Store Locations

(888) 722-5747

(888) 593-6683

Cell (413) 427-8256

Cell (860) 729-0089

At Brimfield Antique Center





J & J
PROMOTIONS

2004 SHOW DATES
May 14,15 • July 9,10
Sept. 10,11

6am - 4pm Friday/\$5 admission • 9am - 4pm Saturday/\$3 admission
 On-site parking \$5 • Oversized vehicles \$10 • No pets, please • Rain or Shine
 P.O. Box 385, Route 20, Brimfield, MA 01010
(413) 245-3436 • (978) 597-8155
 EMAIL: ijnbrimfld@meganet.net • WEBSITE: www.jandj-brimfield.com



Show Schedules		OPENING	Tues	Wed	Thur	Fri	Sat	Sun
Brimfield Acres North	Tues 1pm/Sat 8am	■					■	
Brimfield Antiques Center	Sunrise	■	■	■	■	■	■	■
Brimfield Barn	7am	■	■	■	■	■	■	■
Brimfield Exchange	8am	■	■	■	■	■	■	■
Central Park	Tues 6am	■	■	■	■	■	■	■
Collins Apple Barn	Tues Sunrise	■	■	■	■	■	■	■
Crystal Brook	Tues Sunrise	■	■	■	■	■	■	■
Dealer's Choice	Tues 11am	■						
Francesco's	9am	■	■	■	■	■	■	■
Green Acres	6am	■	■	■	■	■	■	■
Heart-O-The-Mart	Wed 9am		■	■	■	■	■	■
J & J Promotions	Fri 6am				■	■	■	■
Jeanne Hertan Antique Shows	Wed 12noon		■	■	■	■	■	■
Mahogany Ridge	Tues Sunrise	■	■	■	■	■	■	■
May's Antique Market	Thurs 9am			■	■	■	■	■
Midway Antique Shows	Tues 6am	■	■	■	■	■	■	■
New England Motel	Wed 6am		■	■	■	■	■	■
Postcard Extravaganza	Sunrise	■	■	■	■	■	■	■
Quaker Acres	Tues Sunrise	■	■	■	■	■	■	■
Sheltons	Tues Sunrise	■	■	■	■	■	■	■
Stephen's Place	Tues 6am	■	■	■	■	■	■	■
Sturtevant's North	Tues Sunrise	■	■	■	■	■	■	■
Sturtevant's South	Tues Sunrise	■	■	■	■	■	■	■
The Meadows	Tues 6am	■	■	■	■	■	■	■
		open ■						



Jeanne Hertan
Antique Shows

Quality Dealers

Grand Opening Wednesday at noon!
Free admission
On-site Shipping, Fleet ATM, Café

860-763-3760
www.hertansbrimfield.com

FUN, STRESS FREE, MID-SIZE SHOWS...

"Your Tie To Quality Since 1970"

CORDSHOWS.COM

In Ulster & Westchester County, NY
Fairfield & Litchfield County, CT

914-273-4667

Cordshows@aol.com



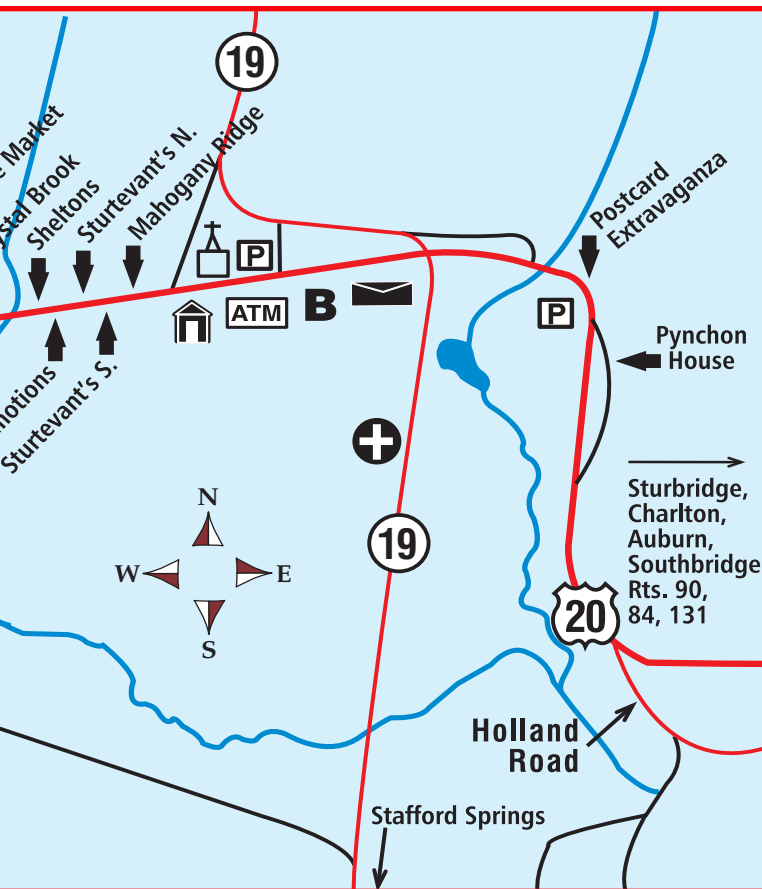
Brimfield Post Office - Open All day

Packaging Supplies • Money Orders • Shipping

413-245-3451

Extended Window Hours 9:00 - 5:00

Located at the Intersection of Rt. 20 & Rt. 19



Put Your Antique Shop On The Map.



Receive year long visibility
on the
Brimfield Exchange website
and in the
Brimfield Pocket Guide.
Pocket Guides available in
6 New England States and online.
Call 413-245-0961 Today !!

See Map Directory - Pages 18/19.

Brand new modern 83 room hotel • Standard guest rooms & suites
 • Restaurant, bar & diner • Outdoor patio & courtyard • Pets welcome • Golf nearby
 • Complimentary deluxe continental breakfast • Minutes from Old Sturbridge Village
 • Outdoor pool & fitness room open
 • Convenient Central New England location

**July
Brimfield Rates
Starting At
\$79!**

QUALITY INN & CONFERENCE CENTER
 400 Haynes Rd., Rt. 15, Sturbridge, MA 01566
 508-347-1978 www.sturbridgequalityinn.com



Everybody's talking about it

85 Center Street • Wolfeboro, NH • Frank Sykes NH #2374 • 603-569-0000 • Antiquebug.com

Auction Schedule

- May 2 General Auction - 20th Century Collectibles & Toys
- May 23 Doll Auction
- May 30 Estate Auction - Dr. Alan & Priscilla Dorian
- June 5 Antiquarian Book Auction
- June 26 6th Annual Boat Auction

*Now accepting quality antiques,
classic boats and antiquarian books for consignment*

BRIMFIELD DEALER DIRECTORY

DEALER	SHOW	BOOTH
Stephen Moss	MAYS	63
Swierads Antiques	Central	8
T-N-T Treasures	NE Motel	P 20-24
Village Green Antiques	Green	Main Row
Vincent D'Angelo	Dealers	C 157
Webber Antiques	BAN	273
Webber Antiques	Central	56/57
West St. Station	Quaker	22
Wiswall House Antiques	NE Motel	20/21

Glass, China & Crystal

2 Hats Antiques	Quaker	9
AbFab Antiques	Quaker	5/6
Affordable Antiques	JJ	B 34
Alfreds Antiques	JJ	D 9,10
All That Glitters	NE Motel	Pavilion 7
Ann Marie O'Neill	HOTM	D 3
Annas Antiques	MAYS	249
Annas Antiques	Hertans	34/35/36
Antico	Green	2nd row-cnr
Antique & Decorating Wherehouse	NE Motel	P 8-12
Antiques and Accents	MAYS	63
Antiques and Accents	HOTM	E 8
Antiques by Barbara	JJ	K 7
Antiques on the Common	Quaker	48
Antiques/Discoveries Collectibles	Quaker	114
Art For Life	MAYS	97
Bell Tower Antiques/Hardware	Central	1
Benefit Street Antiques	MAYS	133
Bettie L. Shields	NE Motel	173 B
Beverly & Kevin Boyce	Stephen	Tent
Bill N Lous Antiques	MAYS	489
Bitters Bottles	JJ	E 28-29
Black Run Antiques	Central	129
Bob and Marge Rolls	Quaker	64
Brantiques	Quaker	70 & 76
Burns Silver Shoppe	Crystal	
C & R Antiques	Central	99
Carriage House Antiques	NE Motel	P 11
Cranberry Cottage Antiques	JJ	Brook 30
Cross Century Antiques	Quaker	8
D & M Antiques	Mahogany	
Days Gone Antiques	Collins	2
Deja Vue Antiques	NE Motel	201
Denny Mangold	Francesco	10
Donna Buccelli	NE Motel	61
Door Knocker Antiques	Mahogany	
Echoes of Time	Quaker	44
Fragile Beauty Antiques	NE Motel	219
Galligans Antiques	Sturt S	
GlimmerGlass Antiques	JJ	C 29
Goose Creek Antiques	Hertans	22-23
Grand View Antiques	HOTM	H-32
Grannys This & That	Collins	3
Halls Antiques	Shelton	M50
Halls Antiques	Shelton	M50
Harvest Antiques	JJ	P-10
Herman Antiques & Collectibles	JJ	A 27
Hoosier Kubboard Glass	JJ	R41
J & S Horn Antiques	Central	83
James Jackson	MAYS	88
Jim & Alberta	JJ	K 13
John/Sharon Yaccarino	Quaker	L 2.8
JSD Antiques	BrimBarn	Inside
Judith Ann DeTrask	MAYS	111
Kramars Kollectible Korner	Quaker	45
Lightning Colors	Quaker	B 8
Louise Kobryner	Central	112
M & M Antiques II	NE Motel	16
Mars-Most Antiques	MAYS	418
Memories on Main St.	Meadows	9/10/11
Mikes & Gayles Toys & Joys	Central	106
Moodys Collectibles	JJ	L 3
MR. Antique	Central	104
Nancy Koly Antiques	NE Motel	103
NE Brass Refinishing/Campello Ant	NE Motel	68 A-B
Nightingales Antiques	Central	20
Nostalgia Unlimited	NE Motel	P25
Primarily Pottery	Quaker	L3-9
Richard & Patricia Lewis	MAYS	376
Robinson Sales	MAYS	395
Rowfant Antiques	MAYS	77
Seagull Antiques	MAYS	445
SeaScape Manor Antiques	Hertans	
Spruce House Antiques	BrimBarn	Inside
Stephen Moss	HOTM	E 8
Stephen Moss	MAYS	63
T. Jordan Elliot Antique Dealer	Meadows	Green tent
The Heritage Shop Antiques	Collins	Front Row

DEALER	SHOW	BOOTH
The Re-Run Shop	Quaker	70
The Sultan of Swap	Sturt N	
The Victorian Rose	NE Motel	M 9
Theresa Jackson Antiques	MAYS	83
Treasure Hunt Antiques	Quaker	L 2, L 8
Treasures Past	Shelton	B 12
Tricias Treasures	NE Motel	28-50
West St. Station	Quaker	22
Wolfs Den Antiques	Hertans	138/139
Yesterdays Memories	JJ	N 47

Guns, Armour & Arms

Cross Roads Antiques	MAYS	142
David Charron	MAYS	394
Irwin Hunsher	Shelton	M 21
Jerry Greenstein	MAYS	253
Sir Richards Antiques	JJ	A6

Hats & Hat Pins

Bunnys Place	JJ	F 1
DeBears & Monkees	Green	Main Aisle
tatters	Sturt S	

Jewelry & Gemstones

Alberta Brown	Midway	20
Alicia Zourdos	MAYS	511
Antico	Green	2nd row-cnr
Antiques Off Broadway	BrimBarn	Inside
Any Antique Will Do	BAN	35
Any Antique Will Do	MAYS	451
Artifacts	JJ	P 40
Artifacts	HOTM	F 110
BeJewelled	MAYS	499
Bill N Lous Antiques	MAYS	489
Burns Silver Shoppe	Crystal	
Cathys Corner	Quaker	B 15/16
Christinas Antiques & Jewelry	Midway	45
Diana Smires Jewelry	Shelton	M 48
Dot Lawrence Antiques	MAYS	658
Dot Lawrence Antiques	BAN	11 T
Estrogen zone	Mahogany	
Gabrielle Casella/Kathie Kustadick	MAYS	31
Goldsmith Jewelers	Crystal	5
Hey-Day Antiques	Midway	4
J & J of Tucson	NE Motel	212 B
J & S Horn Antiques	Central	83
Judith Ann DeTrask	MAYS	111
Judith Clarke	Collins	
Karys Gold & Silver	Crystal	
Larry Stowell Antiques	NE Motel	113
Leda Roberts	MAYS	503
Lori Spencer	NE Motel	214
M.A. Storck Company	MAYS	163
Magi	NE Motel	PA 17-20
MFJ	Dealers	P 15
Mountain Rugs	NE Motel	29
Northumbria	Dealers	B 98
Northumbria	MAYS	184
Old Acres Farm Antiques	Meadows	195
Ooh Aah Antiques	MAYS	508
Ooh Aah Antiques	Shelton	F-9
Patricia Wagner	Shelton	M 16
Peter Wilkinson Jacobs	MAYS	55
Peter Wilkinson Jacobs	BrimBarn	
Plum Blossom Antiques	NE Motel	52, 53
Robert Lloyd Inc.	Shelton	F 31-33
Roger Pheulpin Antiques	Hertans	146
Sandra McNeil Antiques	Sturt N	
Showcase Antique Mall	Hertans	88
Spruce House Antiques	BrimBarn	Inside
Sues Jewels	Collins	
Terezi Vintage Costume Jewelry	Dealers	Pavilion
The Antique Pool	Central	109
The Potting Shed	Central	120
ThingsGoneBy.Com	Dealers	Pavilion
ThingsGoneBy.Com	JJ	E7
Treasures Past	Shelton	B 12

Kitchen Related

Antique Coffee Mills	Hertans	195
Avatar Antiques	Quaker	37-39
Brownstead Antiques	Hertans	115
Colleen Vagnini Antiques	Midway	46, 59
Cottage Antiques	MAYS	394
D & R Antiques	JJ	A 31
Edward/Patricia Seidel	JJ	Brook 16/17
Ericksons Antique Stoves	MAYS	377
Furniture Farm & Antiques	JJ	H 28
Hometown Antiques	NE Motel	23

DEALER	SHOW	BOOTH
Jean Lamar	Quaker	13/14
Jim & Kayce Dimond	Green	Main Aisle
Jim & Kayce Dimond	JJ	P-15/16
Keller & Ross	Quaker	L 3, L 9
Lauras Dollhouses & Collectibles	Central	3 B
Marbo Collectibles	JJ	Brook 24
Mason Dixon Memories	Quaker	13/14
Memories on Main St.	Meadows	9/10/11
Mixing Bowl Antiques	NE Motel	M 7
Now & Then	BAN	Tent
Primitive Spirit Antiques	Mahogany	
Reminisce With Ruth	Central	84
Swierads Antiques	Central	8
Twentieth Century Designs	Meadows	150
Whatevers Antiques	JJ	A 52

Lamps & Lighting



Moveall.com
Brimfield's
Experts at
packing fragile
Items.

**"Custom molded
Foam-In-Place packing available"**

Located at Brimfield Antique Center • Toll Free 888-593-6683

Alfreds Antiques	JJ	D 9,10
Antiques Handles	Quaker	8
Architectural Emporium	Meadows	
Architectural Emporium	Collins	Street
Avatar Antiques	Quaker	37-39
B & B Antiques	Midway	Inside
Back From The Past Antiques	NE Motel	R-3
Bear Creek Trading Company	Quaker	B 5-6
Black Swan	Midway	5
Bob Withington Antiques	HOTM	E-tent
Butler & Butler Antiques	Sturt N	Near Pool
Carl Haraska	JJ	D-12
Carriage House Antiques	NE Motel	P 11
Country Brass	NE Motel	46
Dantiques-Hookn Pennies	Hertans	205
Dantiques-Hookn Pennies	Dealers	D 226
Dayles Antiques	NE Motel	M 8
Days Antiques	Francesco	Street
Days Antiques	HOTM	D 16
Down The Road Antiques	JJ	Brook 29
Eclectic Antiques	JJ	D 31
Ed Finney Antiques	MAYS	362
Fancy That Antiques	Francesco	F 1
George Briggs	MAYS	654
Goose Creek Antiques	Hertans	22/23
Greenhouse Antiques	JJ	A 12
Halls Antiques	Shelton	M50
Halls Antiques	Shelton	M50
J & S Horn Antiques	Central	83
J. Pasternak & Son Antiques	Meadows	31/32
Jack Adamson	Hertans	39
Jim Brady Antiques	Mahogany	36
Leigh Cote Antiques	Meadows	61-63
Lightning Colors	Quaker	B 8
Michael Levinson	MAYS	58
Monkton Mill Antiques	MAYS	60
NE Antiques of Punta Gorda	Green	VT Tent
NE Brass Refinishing/Campello Ant	NE Motel	68 A-B
New England Architectural	Sturt S	On road
Old Acres Farm Antiques	Meadows	195
Olde Good Things	MAYS	638
Olde Good Things	Dealers	C 146-47
Olde Good Things	Sturt N	
Olde Good Things	HOTM	A-40
Olde Good Things	JJ	B 22
Robert/Kathy/Michaela Baranowsky	JJ	B-2/B-11
Roche Clan Antiques	HOTM	C 1-3
Rudy & Irene Schultz	Hertans	59 A
Smith-Zukas Antiques	Hertans	8, 9
Snooty Fox Antiques	NE Motel	8
Stissing Mountain Antiques	JJ	R 44
Stoneware John	Midway	5
The Closetful	Central	68, 46
The Dusty Shelf	MAYS	74
Treasure Hunt Antiques	Quaker	L 2, L 8
Vintage Poster Bank	Meadows	172/73
Willmert/Newell Antiques	Dealers	A 15

Lithograph & Engraving

Anne Negrin Antiques	JJ	R 36/37/38
Artfull Eye	Shelton	F 05

BRIMFIELD DEALER DIRECTORY

DEALER	SHOW	BOOTH
Maps		
Anne Hall Antique Prints	Shelton	F-20
Marbles		
Blair Collectibles	Green	VT Tent
Larkins Antiques	Quaker	116
Mike Wilson Antiques	Green	VT Tent
Ough Antiques	JJ	F 28
Ough Antiques	HOTM	J 17
Marine & Nautical		
Bayberry Art & Antiques	JJ	A-21
Buoys Traps and Things	Quaker	85/86
Cyrus Doomasia	Sturt N	Rt. 20
Malchione Antiques & Sporting	JJ	J 4
Malchione Antiques & Sporting	HOTM	D 2
Oak Barrel Antiques	Midway	8
Paul J. DeCoste	JJ	R 42/43
Phillip Anderson Antiques	MAYS	150
Terry Walker Antiques	Midway	11, 25
The Grange	Quaker	B12/13
Medical		
Harmics Antiques	Hertans	58
Stonegate Antiques	JJ	G 33
Memorabilia		
Awsom Advertising	NE Motel	PA 16
Cobalt Turtle Antiques	JJ	E 12/13
Colleen Vagnini Antiques	Midway	46, 59
Elmwood Antiques	Central	126
Film Richards	Quaker	19
Lauras Dollhouses & Collectibles	Central	3 B
Lillian Goodspeed	Hertans	29
Lori Spencer	NE Motel	214
Nostalgia Unlimited	NE Motel	P25
Plymouth Rock Toy Co.	JJ	P 2-3
Robb Carty Collectibles	Central	114
Metalware		
Jeffrey Greene Antiques	Quaker	139
Military		
Alex Milman	Quaker	114
Amazing Antiques	Quaker	118
Cillo Enterprises LTD	Midway	3
Class Menagerie	Hertans	40
Cyrus Doomasia	Sturt N	Rt. 20
Irwin Hunsher	Shelton	M 21
Jerry Greenstein	MAYS	253
Joe Torre	NE Motel	Front
Joseph McGaughey	MAYS	402
Misery Island Sporting Collectibles	Stephen	
Old Federal Shop	MAYS	525
Peace Antiques	NE Motel	223
T-N-T Treasures	NE Motel	P 20-24
TransAmerican Antiques	NE Motel	17
Miscellaneous & Other		
Alberta Brown	Midway	20
Antiques & Discoveries Collectibles	Quaker	114
Any Antique Will Do	BAN	35
Any Antique Will Do	MAYS	451
Boston Antiques Coop. No. 1	HOTM	D-12
Buoys Traps and Things	Quaker	85/86
Cellar Shop	Quaker	26
Cranberry Estate Sales	NE Motel	8-9
Deja Vue Antiques	NE Motel	201
Duncans Market	Quaker	27
Fletchs Antiques	NE Motel	239
Goose Creek Antiques	Hertans	22-23
Holiday Happenings	MAYS	89
Jean-Pierre Labbe	Hertans	159/160
John/Sharron Yaccarino	Quaker	L 2,8
Joyce Antiques	NE Motel	245
Judith Ann DeTrask	MAYS	111
Kramars Collectible Korner	Quaker	45
Lillian Goodspeed	Hertans	29
Mountain Niche Antiques	Hertans	29
newenglandfleamarkets.com	Hertans	
Olivias Attic Ltd	Mahogany	
Quaboag Valley Antiques Center	JJ	Brook 1-3
Robb Carty Collectibles	Central	114
Shoe Rack Lady	MAYS	397
Shoe Rack Lady	BAN	546
STU-ARTz	Quaker	100
The Orchard	Central	82
White Water Antiques	MAYS	381

DEALER	SHOW	BOOTH
Musical		
Nippers Choice	JJ	J 14 & 34
The Victrola Man	Meadows	76
Native American		
Avatar Antiques	Quaker	37-39
Brantiques	Quaker	70 & 76
Classic Junque	MAYS	54
Diana Smires Jewelry	Shelton	M 48
Elmwood Antiques	Central	126
Frederic Hartl	Hertans	116/116 D
Irwin Hunsher	Shelton	M 21
J & J of Tucson	NE Motel	212 B
Stuff and Things Antiques	JJ	Brook 33
Optical		
Vintage Eyeware-New York City	Crystal	On road
Oriental/Orientalia		
Bennett Antiques	JJ	Fence 6
Butler & Butler Antiques	Sturt N	Near Pool
Furniture de Charme	Francesco	Road
Grand View Antiques	HOTM	H-32
Greenhouse Antiques	JJ	A 12
JSD Antiques	BrimBarn	Inside
L & M Furniture	Crystal	6
Martell & Suffin Antiques	Dealers	C 181
Martell & Suffin Antiques	HOTM	F 50
Michael/Claire Higgins Antiques	MAYS	457
Michael/Claire Higgins Antiques	HOTM	A 11
MR. Antique	Central	104
Oxus River Gallery	Sturt N	Main Road
Plum Blossom Antiques	NE Motel	52, 53
Paper		
All Collectors.com, Inc.	Meadows	Rd 33/34
Gail Watson	Quaker	110
Gray Collectibles and Supplies	BAN	Inside
Leon Jackson	MAYS	494
Postcard Images	JJ	P 14
Recollections	BAN	Inside
Richard F. Murphy Jr. Books	MAYS	178
Rorkes Drift	JJ	P 6
Rorkes Drift	BAN	363/364
Thomas S. Mills	BAN	Inside
Weathered Wheel Antiq/Postcards	PostEx	3
Pewter		
Alicia Zourdos	MAYS	511
Hermitage Antiques	MAYS	126
Hoffmans Antiques	Quaker	84
Photographica		
Art For Life	MAYS	97
Carl Fila & Rob McElroy	MAYS	154
Design Antiques	MAYS	322
Gail Watson	Quaker	110
Gerald Newman	HOTM	I 13
Iron Gate Antiques	JJ	M 38
JoAntiques	JJ	A 64
Park Antiques	MAYS	331
Poor Warrens Antiques	Hertans	75
The Rite Image	MAYS	415
Tom & Carol Halsdorf	Sturt N	Last Row
Weathered Wheel Antiq/Postcards	PostEx	3
Postcards		
POSTCARDS • STEREO CARDS • TRADE CARDS • EPHEMERA		
TOM MILLS		
BRIMFIELD ACRES NORTH • POSTCARD BUILDING		
62 Oakwood Drive, Oxford, CT 06478 • (203) 888-0205		
email: colpap@aol.com		
Artifacts	JJ	P 40
Artifacts	HOTM	F 110
Blair Collectibles	Green	VT Tent
Cartophilan Collectibles	BAN	Inside
Gail Watson	Quaker	110
Glens Cards	Central	92
Gray Collectibles and Supplies	BAN	Inside
Jim & Kayce Dimond	Green	Main Aisle
Jim & Kayce Dimond	JJ	P-15, 16
Judy & Jake Gillison	PostEx	
L & M Antiques	JJ	G 22

DEALER	SHOW	BOOTH
Mainly Paper Antiques	JJ	G 02
Mary L. Martin LTD	JJ	H 21
Mary L. Martin LTD	PostEx	Inside
Memory Lane Postcards	PostEx	
Postcard Images	JJ	P 14
Recollections	BAN	Inside
Stissing Mountain Antiques	JJ	R 44
The Rite Image	MAYS	415
The Zussman Collection	MAYS	82
Thomas S. Mills	BAN	Inside
Tom & Carol Halsdorf	Sturt N	Last Row
Weather or Knot Antiques	Midway	46, 59
Weathered Wheel Antiq/Postcards	PostEx	3
Wildflowers Antiques	JJ	A 63/64
Pottery & Porcelain		
2 Hats Antiques	Quaker	9
20th Century Objex	MAYS	414
20th Century Objex	BAN	23
Alex Moreno	Hertans	83
All That Glitters	NE Motel	Pavilion 7
Annas Antiques	MAYS	249
Annas Antiques	Hertans	34/35/36
Antiques Off Broadway	BrimBarn	Inside
Armel Antiques	Sturt N	
Art and Antiques	MAYS	504
B & B Antiques	Midway	Inside
BeJewelled	MAYS	499
Beverly & Kevin Boyce	Stephen	Tent
Black Run Antiques	Central	129
Blue Whale Antiques	Quaker	136
Crones Collectibles	BrimBarn	
D & M Antiques	Mahogany	
Dayles Antiques	NE Motel	M 8
Days Gone Antiques	Collins	2
DeBears & Monkees	Green	Main Aisle
Deja Vue Antiques	NE Motel	201
Denny Mangold	Francesco	10
Favorite Past-Times Antiques	JJ	N 46
Greg Huber	NE Motel	R 5,6
Harvest Antiques	JJ	P-10
Heritage Gallery	BrimBarn	Inside
Hey-Day Antiques	Midway	4
Janis Petrovich	BrimBarn	In Mid L
Kathy/Kims Corner Cupboard	JJ	N 35
Keller & Ross	Quaker	L 3, L 9
Kendall Antiques	Crystal	5
Kramars Collectible Korner	Quaker	45
Laurel Antiques of Maine	BrimBarn	Inside
Louise Kobryner	Central	112
M & M Antiques II	NE Motel	16
Mars-Most Antiques	MAYS	418
Michael Levinson	MAYS	58
Michael Smith	MAYS	85
Mike Wilson Antiques	Green	VT Tent
MR. Antique	Central	104
Nancy Koly Antiques	NE Motel	103
NE Antiques of Punta Gorda	Green	VT Tent
Nostalgia Unlimited	NE Motel	P25
Pennys & Cents Antiques	JJ	Last Row
Pittsburgh Antique Mall	JJ	C-12
Primarily Pottery	Quaker	L3-9
Richard & Patricia Lewis	MAYS	376
Roger Pheulpin Antiques	Hertans	146
Rudy & Irene Schultz	Hertans	59 A
Somebodys Antiques	NE Motel	218
The Antique Poole	Central	109
The Sultan of Swap	Sturt N	
The Victorian Rose	NE Motel	M 9
Trillium Antiques	NE Motel	P19
Webber Antiques	BAN	273
Webber Antiques	Central	56-57
White Water Antiques	MAYS	381
Wiswall House Antiques	NE Motel	20/21
Primitives		
Alex Moreno	Hertans	83
Antique Coffee Mills	Hertans	195
Antiquities	Quaker	L4-5
Apple Country Antiques	JJ	C 06
Baileys Antiques	Quaker	40
Bay State Antiques	Hertans	66
Bear Creek Trading Company	Quaker	B 5-6
Brownstead Antiques	Hertans	115
C & L Antiques	Green	407
Central Market Antiques	Midway	2
Cote Auction	Meadows	312
Cote Auction	MAYS	665
Cottage Antiques	MAYS	394
Country Lady Antiques	Green	908

BRIMFIELD DEALER DIRECTORY

DEALER	SHOW	BOOTH	DEALER	SHOW	BOOTH	DEALER	SHOW	BOOTH
Country Lady Antiques	JJ	F 23	Michael Smith	MAYS	85	Primitive Spirit Antiques	Mahogany	
Country Squire Antiques	NE Motel	47-49	Mountain Rugs	NE Motel	29	Recycling the Past	Meadows	Back of
D & N Sandys	Dealers	Pavillion	Rowfant Antiques	MAYS	77	Field		
D & N Sandys	JJ	C 31	Tribal Art	Midway	76	Richard J. Riley Antiques	JJ	L 5
D & R Antiques	JJ	A 31	Scientific Instruments			Richard J. Riley Antiques	BAN	394
Double G Farms Antiques	JJ	J21	Cyrus Doomasia	Sturt N	Rt. 20	Rob & Ruth Lyon	JJ	E 22
Duncans Market	Quaker	27	Dox Clox	JJ	P 8	Robert Lanagan	Green	104
Frederic Hartl	Hertans	116/116 D	Harmcyns Antiques	Hertans	58	WebWilson.com	JJ	A 60
Furniture de Charme	Francesco	Road	Park Antiques	MAYS	331	Transportation		
Great Stuff by Paul	Hertans	b,c,d,e	Paul J. DeCoste	JJ	R 42/43	Brian Maiher	Quaker	B 19
Grotheer	Dealers	C 170	Richard J. Riley Antiques	JJ	L 5	Buckbolder Antiques	NE Motel	Front
Grotheer	MAYS	610	Richard J. Riley Antiques	BAN	394	Dot Lawrence Antiques	MAYS	658
Hiawatha Country Woodshop	Quaker	94	Staffordshire			Dot Lawrence Antiques	BAN	11 T
Jamtiques	HOTM	A 21	2 Hats Antiques	Quaker	9	Ed Lyons Antiques	Hertans	79
Jean-Pierre Labbe	Hertans	159-160	Clark Farm Antiques	JJ	A 14	Gerald Newman	HOTM	I 13
Joyce Antiques	NE Motel	245	Dennis & Dad Antiques	MAYS	393	Old Federal Shop	MAYS	525
Lone Ranger Antiques	Quaker	104-105	Evelyn Andeen	Hertans	54	T-N-T Treasures	NE Motel	P 20-24
Meissners Auction Service	BAN	86	Grey Goose Antiques	Central	2	Victorian		
Meissners Auction Service	Hertans	91/92	Hedgeworth Antiques	MAYS	519	Andrews Antiques	Quaker	55/56
Melissas Antiques	MAYS	127	Kathy & Kims Corner Cupboard	JJ	N 35	Antiques Handles	Quaker	8
Millers Antiques	MAYS	452	T. Jordan Elliot Antique Dealer	Meadows Green tent		Back From The Past Antiques	NE Motel	R-3
Ough Antiques	JJ	F 28	Trillium Antiques	NE Motel	P19	Cross Century Antiques	Quaker	8
Ough Antiques	HOTM	J 17	Steiff & Teddy Bears			Design Antiques	MAYS	322
Past Times Antiques	NE Motel	24	Bay State Antiques	Hertans	66	Down The Road Antiques	JJ	Brook 29
Peppercricket Farm	JJ	Brook 10	Dover Doll Clinic	MAYS	11	GlimmerGlass Antiques	JJ	C 29
Presence From The Past Antiques	JJ	A62	Lilac House Antiques/Galleries	BrimBarn	On road	Janis Petrovich	BrimBarn In Mid Left	
Primitive Spirit Antiques	Mahogany		Shelly Smith/Tory Beth Radwick	Central	121	Larry Stowell Antiques	NE Motel	113
Richard Fuller Antiques	MAYS	475	Susan Walter-Antiques	HOTM	G-41	Spinning Wheel Antiques	Stephen	Tent
Richard J. Riley Antiques	JJ	L 5	Sterling & Silver Plate			The Victorian Rose	NE Motel	M 9
Richard J. Riley Antiques	BAN	394	Alfreds Antiques	JJ	D 9/10	ThingsGoneBy.Com	Dealers	Pavillion
Robert Lanagan	Green	104	Alicia Zourdos	MAYS	511	ThingsGoneBy.Com	JJ	E7
Rubleys Antiques	Dealers	A 67	Any Antique Will Do	BAN	35	Vintage Pastelle	NE Motel	303A
Rubleys Antiques	BAN	338	Any Antique Will Do	MAYS	451	William E. Lohrman	MAYS	520
Shoe Rack Lady	MAYS	397	Bench Jeweler-A Sterling Idea	MAYS	492	Wolfs Den Antiques	Hertans	138/139
Shoe Rack Lady	BAN	546	Bunnys Place	JJ	F 1	Vintage Clothing		
Smiths Antiques	Quaker	39	Burns Silver Shoppe	Crystal		Alley Antiques and Collectibles	JJ	M 03.33
Steve Arndt Antiques	MAYS	28	Butler & Butler Antiques	Sturt N	Near Pool	Antico	Green	2nd row-cnr
Stonehedge Antiques	JJ	E 5	Carl L. Bosk	BAN	467	Antique Apparel	HOTM	B74
The Scottish Trader	Quaker	112-122	Dan & Nancys Antiques	BrimBarn	Front Cent	Eileen Love	NE Motel	225/225A
The Seawife	Meadows		Days Gone Antiques	Collins	2	Estrogen zone	Mahogany	
The Workshop	JJ	Brook 5	Elegant Artifacts	MAYS	516	Gabrielle Casella/Kathie Kustadick	MAYS	31
Weather or Knot Antiques	Midway	46, 59	J & J of Tucson	NE Motel	212 B	Hasbeens	MAYS	539
Prints & Posters			Jamtiques	HOTM	A 21	Johnsons Vintage Linens/Clothing	NE Motel	189/190
Anne Hall Antique Prints	Shelton	F-20	JoAnntiques	JJ	A 64	Lillian Goodspeed	Hertans	29
Anne Negrin Antiques	JJ	R 36/37/38	Joe Torre	NE Motel	Front	Magi	NE Motel	PA 17-20
Architiques	Quaker	57-60	Malcolm Reiss	MAYS	24	Mid Century Chic	Meadows	172-73
Bill & Joan Lennon	JJ	F 24/25	Michael Levinson	MAYS	58	Mount Vernon Antiques	HOTM	C 31
Favorite Past-Times Antiques	JJ	N 46	Philip Anderson Antiques	MAYS	150	Mount Vernon Antiques	Dealers	D 272
Fred Glogower	Quaker	L 10	Presence From The Past Antiques	JJ	A62	Patricia Wagner	Shelton	M 16
Harvest Antiques	JJ	P-10	Reminisce With Ruth	Central	84	Sandra McNeil Antiques	Sturt N	
History Gallery	Hertans	55	Robert Lloyd Inc.	Shelton	F 31-33	tatters	Sturt S	
Joyce Charbonneau	JJ	Brook 23	Roger Pheulpin Antiques	Hertans	146	The Green Mannequin	Quaker	53
Kay Bakers Antiques	MAYS	84	Seagull Antiques	MAYS	445	Vintage Eyeware-New York City	Crystal	On road
Mary Fazzino	Quaker	28	Spruce House Antiques	BrimBarn	Inside	Vintage Revival	Sturt S	
Memory Lane Postcards	PostEx		Stissing Mountain Antiques	JJ	R 44	Walkers Collectibles	Dealers	P 16
Picture Window Antiques	Quaker	B 18	Stone Block Antiques	Green	VT Tent	Walkers Collectibles	JJ	M 44
Red City Antiques	Central	22	The Gryphons Nest	Shelton	F-1	Woodland Farms Antiques	HOTM	B 22
The Griffins Gallery	HOTM	D 10	Theresa Jackson Antiques	MAYS	83	Vintage Textiles & Linens		
Vintage Poster Bank	Meadows	172-73	Tricias Treasures	NE Motel	28-50	1840 House	MAYS	540
Quilts			White Water Antiques	MAYS	381	1840 House	HOTM	F Tent
Adamsons Antiques	Hertans	38	Window of Time Antiques	Dealers	B 93	A.T. Roches	Quaker	97-98
Antiques & Artifacts	Hertans	172	Yesterdays Memories	JJ	N 47	Adamsons Antiques	Hertans	38
Beverly & Kevin Boyce	Stephen	Tent	Yudin & Associates	Shelton	M 15	Benefit Street Antiques	MAYS	133
Darwin D. Bearley Antiques	Shelton	F-8	Stoneware & Yellowware			C & L Antiques	Green	407
Double G Farms Antiques	JJ	J21	Adamsons Antiques	Hertans	38	Clark Farm Antiques	JJ	A 14
Johnsons Vintage Linens/Clothing	NE Motel	189-190	Bakers Antiques	HOTM	A 24	Dustys Vintage Linens	NE Motel	171, 183
JSL Quilts	Central	37	Bitters Bottles	JJ	E 28/29	Eileen Love	NE Motel	225/225A
Martha Perkins	BAN	121	Cobalt Turtle Antiques	JJ	E 12/13	Estrogen zone	Mahogany	
Martha Perkins	MAYS	156	Cottage Antiques	MAYS	394	Hasbeens	MAYS	539
Mount Vernon Antiques	HOTM	C 31	Hartmann House Antiques	HOTM	G 10	Jennings & Rohn Antiques	HOTM	E- Tent
Mount Vernon Antiques	Dealers	D 272	Hartmann House Antiques	JJ	Brook 9	JoAnntiques	JJ	A 64
Old Threads Antique Textiles	Crystal	Front	Impulsive Antiques	Quaker	117	Johnsons Vintage Linens/Clothing	NE Motel	189/190
The Dusty Shelf	MAYS	74	Melissas Antiques	MAYS	127	judycentille.com	Central	100
The Peddlers Chest	JJ	Brook 4	R.J. Nichols Auction Co.	MAYS	555	Kristine Tibbetts	Central	45
Radios & Phonographs			Stoneware John	Midway	5	M & M Antiques II	NE Motel	16
Jim Brady Antiques	Mahogany	36	The Potting Shed	Central	120	Magi	NE Motel	PA 17-20
John T. Pierce Antiques	Dealers	A 5	Victorian Manor Antiques	JJ	D-6	Marbo Collectibles	JJ	Brook 24
Kendall Antiques	Crystal	5	Tools & Hardware			Martha Perkins	BAN	121
Nippers Choice	JJ	J 14&34	Bell Tower Antiques/Hardware	Central	1	Martha Perkins	MAYS	156
The Victrola Man	Meadows	76	Duncans Market	Quaker	27	Mason Dixon Memories	Quaker	13-14
Records			Fletchs Antiques	NE Motel	239	Meadowbrook Farm Antiques	NE Motel	88/89
Nippers Choice	JJ	J 14&34	Jamtiques	HOTM	A 21	Memories on Main St.	Meadows	9/10/11
Rugs-Oriental & Indian			Kay Bakers Antiques	MAYS	84	Michael Mccue	MAYS	271
Elm City Antiques	Midway	4	One Stop Antiques Inc.	Meadows	179-184	Mid Century Chic	Meadows	172/173
Henry Stek/Setkiewicz Antiques	NE Motel	94				Mixing Bowl Antiques	NE Motel	M 7
						Northumbria	Dealers	B 98

BRIMFIELD DEALER DIRECTORY

DEALER	SHOW	BOOTH	DEALER	SHOW	BOOTH	DEALER	SHOW	BOOTH
Northumbria	MAYS	184	Vintage Pastelle	NE Motel	303A	Wicker		
Now & Then	BAN	Tent	Walkers Collectibles	Dealers	P 16	Affordable Antiques	JJ	B 34
Old Threads Antique Textiles	Crystal	Front	Walkers Collectibles	JJ	M 44	Joni Lima	Hertans	184
Patricia Kosmoski	Quaker	115	Wiggletown	NE Motel	197	Willmert/Newell Antiques	Dealers	A 15
Picture Window Antiques	Quaker	B 18	Wildflowers Antiques	JJ	A 63,64	Wolfs Den Antiques	Hertans	138/139
Sold By Sue Wearsch	Shelton	B 14	Wiswall House Antiques	NE Motel	20/21			
Stonehedge Antiques	JJ	E 5	Woodland Farms Antiques	HOTM	B 22	Wrought Iron		
Susan Gower	Central	116	Woodwards Antiques	Meadows	83/84	BE Sales	Shelton	B 42-45
Swan Antiques	HOTM	E- Tent				Bridges Over Time	Dealers	D 255
tatters	Sturt S		Wallace Nutting			EuroPorts LLC	Central	15
The Closetful	Central	68, 46	Kathy/Kims Corner Cupboard	JJ	N 35	Johns Iron Garden	Collins	Outside Tent
The Cooperage	Quaker	69	Moodys Collectibles	JJ	L 3	Marvin Gardens	Quaker	B 14 - B 20
The Green Mannequin	Quaker	53	The Potting Shed	Central	120	Nothing Definite	Quaker	80-81
The Vintage Closet	Quaker	61				Nothing Definite	Shelton	Driveway
Tribal Art	Midway	76	Western Memorabilia			Recycling the Past	Meadows	Back Field
Vintage Fabrics & Etc.	MAYS	52	Class Menagerie	Hertans	40	Sandstone Gardens	Quaker	L 12

Downeast Grandfather Clock Care

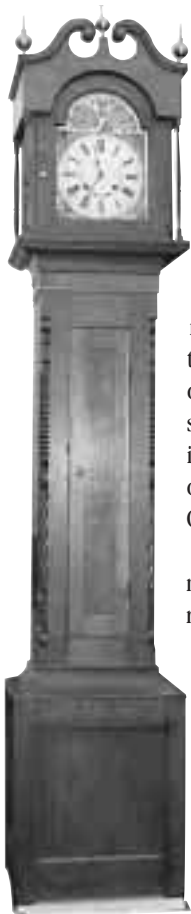
My name is Harry W. Hepburn from Harrison, Maine. I have been repairing old and antique clocks since 1968 and thought I would share with you a few clock care tips. The Grandfather Clocks that stood so proudly in the early homes in the 1700's & 1800's were called Tall Clocks, Hall Clocks or Long Case Clocks. They first got their name Grandfathers Clock after the poem "My Grandfathers Clock" was published in the late 1800's.

There are basic areas one needs to consider in caring for your old clock, clock movement, lubrication, the pendulum and exterior care.

Clock movements were made of two basic materials - wood and brass - but as with almost everything in the world of antiques there are exceptions. Wood movements are never oiled because an iron axle runs on a wood bearing so the more you run the clock the better it works. The iron polished the wood bearing.

Brass Movements need oil and should, after being rebuilt, be cleaned and re-oiled every 4 to 6 years. Remember, antique clocks are merely small engines with moving parts that need to be lubricated. Over oiling of any clock on the other hand is in the long run harmful because oil is like a magnet, and will pull from the air small pieces of dirt that will build up in the bearings and turn an oil lubricant to an abrasive. Over oiling your clock was never good advice given by Grandfather!

In addition to oiling antique clocks we need to understand that these little engines are regulated by what we call a pendulum, which swings from one side to the other. If the clock is placed on an unstable floor or table the movement of people, cars & trucks, etc. will in effect cause a loss of power and the clock may stop. It makes good practice to place your clock in an area where movement will not be a factor. Pendulums are the time keepers - if your clock runs too fast you can adjust the pendulum down (usually by turning a nut under the pen-



dulum counter clockwise). If your clock runs too slow adjust the pendulum up. Keep in mind you never adjust the pendulum either way very much - just a slight turn - then monitor the time over two or three days. If the clock still runs too fast or too slow, adjust the pendulum a little more until your clock continues to keep good time over a period of a week. Keep in mind that most old clocks will gain or loose a little time over a longer period of time and slight adjustments may be needed.

Exterior Care of an older clock is simple, when in doubt, leave the case alone until you talk to an expert. Most antique furniture dealers can be helpful and should be able to give guidance in the exterior care.

If you have questions on clock care please email them to me, Hermant@Adelphia.net or feel free to visit me at my booth # 126 in May's Antique Market during the May and September shows.

GRAPHIC DESIGN · ADVERTISING ART

ADS (NEWSPAPER/MAGAZINE) · BROCHURES
CATALOGS · FLYERS · CREATIVE SERVICES

STEPHEN
EICHHORN DESIGN
CRANSTON RHODE ISLAND

401.461.2582 PH · 401.461.9517 FX
EICHHORNDESIGN@AOL.COM

Design and Creative on Brimfield Pocket Guide for past 3 years.

America's Favorite Treasure Hunt!

Atlanta, Georgia
MAY 7 - 9
JUN. 11 - 13
JUL. 9 - 11
Columbus, Ohio
NOV. 27 & 28
DEC. 18 & 19



Tampa, Florida
JAN. 1 & 2 2005

www.scottantiquemarket.com

P.O. Box 60 • Bremen, OH 43107 • (740) 569-4112

Massachusetts Antique Shops

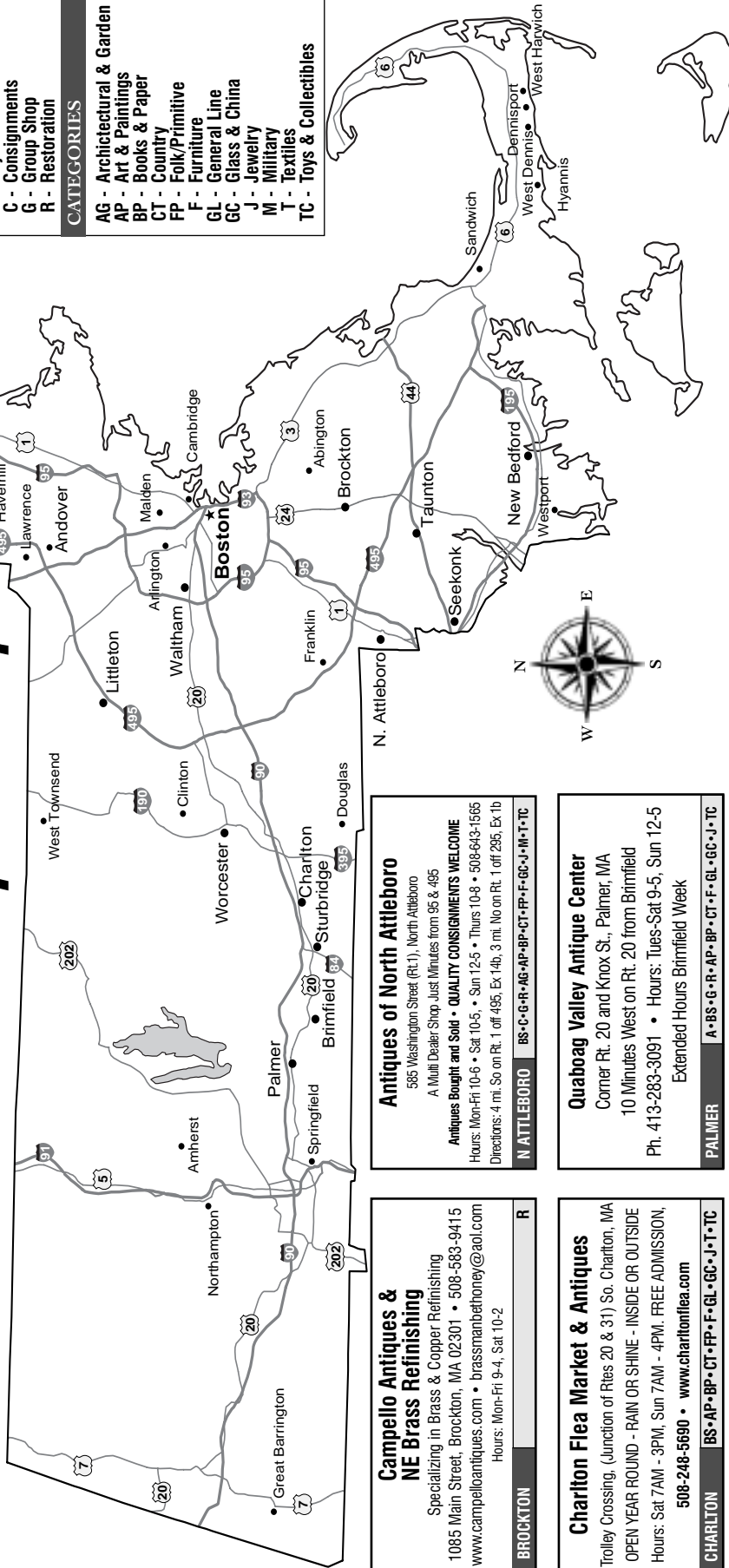
ANTIQUÉ SHOPS KEY

SERVICES

- A - Appraisals
- AU - Auction Services
- BS - Buys & Sells Estates
- C - Consignments
- G - Group Shop
- R - Restoration

CATEGORIES

- AG - Architectural & Garden
- AP - Art & Paintings
- BP - Books & Paper
- CT - Country
- FP - Folk/Primitive
- F - Furniture
- GL - General Line
- GC - Glass & China
- J - Jewelry
- M - Military
- T - Textiles
- TC - Toys & Collectibles



Antiques of North Attleboro
 585 Washington Street (Rt.1), North Attleboro
 A Multi Dealer Shop. Just Minutes from 95 & 495
Antiques Bought and Sold • QUALITY CONSIGNMENTS WELCOME
 Hours: Mon-Fri 10-6 • Sat 10-5 • Sun 12-5 • Thurs 10-8 • 508-643-1565
 Directions: 4 mi. So on Rt. 1 off 495, Ex 14b, 3 mi. No on Rt. 1 off 295, Ex 1b

N ATTLEBORO BS-C-G-R-AG-AP-BP-CT-PP-F-GC-J-M-T-TC

Quaboag Valley Antique Center
 Corner Rt. 20 and Knox St., Palmer, MA
 10 Minutes West on Rt. 20 from Brimfield
 Ph. 413-283-3091 • Hours: Tues-Sat 9-5, Sun 12-5
 Extended Hours Brimfield Week

PALMER A-BS-G-R-AP-BP-CT-F-GL-GC-J-TC

Vinny's Antiques Center
 380 Fall River Ave., Route 114A
 Seekonk, MA 02790 • Ph. 508-336-0800
 Hours: Mon - Sat 10-5 • Sun and Holidays 12-5
 300 Dealers

SEEKONK A-BS-G-R-AP-BP-F-GL-GC-J-M-T-TC

Sturbridge Antique Shops
 Route 20, Sturbridge, MA 01566 • Ph. 508-347-2744
12,000 Sq. Ft of Antiques and Collectibles
Only 8 Miles East of Brimfield on Rt. 20
 Reg. Hours: Mon - Fri 9 - 5, Sat & Sun 10 - 5
 Brimfield Hours: Sun - Sat - Brimfield Week 9 AM - 8 PM

STURBRIDGE A-BS-C-G-AG-AP-BP-CT-PP-F-GC-J-M-T-TC

Campello Antiques & NE Brass Refinishing
 Specializing in Brass & Copper Refinishing
 1085 Main Street, Brockton, MA 02301 • 508-583-9415
 www.campelloantiques.com • brassmanbethoney@aol.com
 Hours: Mon-Fri 9-4, Sat 10-2

BROCKTON R

Charlton Flea Market & Antiques
 Trolley Crossing, (Junction of Rtes 20 & 31) So. Charlton, MA
 OPEN YEAR ROUND - RAIN OR SHINE - INSIDE OR OUTSIDE
 Hours: Sat 7AM - 3PM, Sun 7AM - 4PM. FREE ADMISSION,
 508-248-5690 • www.charltonflea.com

CHARLTON BS-AP-BP-CT-PP-F-GL-GC-J-T-TC

Erickson's Antique Stoves, Inc.
 Restoration, Conversion and Sales
 of Antique Stoves and Ranges
 2 Taylor Street, Box 2275, Littleton, MA 01460
 Ph. 978-486-3589 • Cell 978-857-8014
 erickstove@comcast.net

LITTLETON R

Acushnet River Antiques
 95 Dealers
 72 Kilburn St., New Bedford, MA • Ph/Fax 508-992-8878
 Hours: Mon - Sat 10 - 5, Sun 11 - 4
 Take 195 to Exit 16 East or 17 West
 Turn left to Belville, then left to Kilburn Street

NEW BEDFORD BS-C-G-AG-AP-BP-CT-PP-F-GC-J-T

Taunton Antiques Center
 19 Main Street, Route 44, Taunton, MA 02780
 Ph. 508-821-3333. Email: tauntonantiques@aol.com
 Hours: Mon - Sun 10 - 5
35,000 sq. ft. of Quality Antiques and Collectibles.
 Imported European Furniture & Smalls

TAUNTON A-C-BS-G-AG-AP-BP-CT-PP-F-GC-J-M-T-TC

Massachusetts Antiques Cooperative
 2 Great Shops - 1 Location - Over 175 Dealers
 100 Falcon Street, Waltham • 781-893-8883
 Open 6 days 10-5, Thurs 'til 8, Closed Tues. and last 2 weeks of July
 1 mi. from 128(95) & 190. Take 128(95) Ex 26, MS, to Rt. 20 E
 R at Moody St. (Sovereign Bank). 1st light R(Chart Bank) to Falcon
 massantiques.com

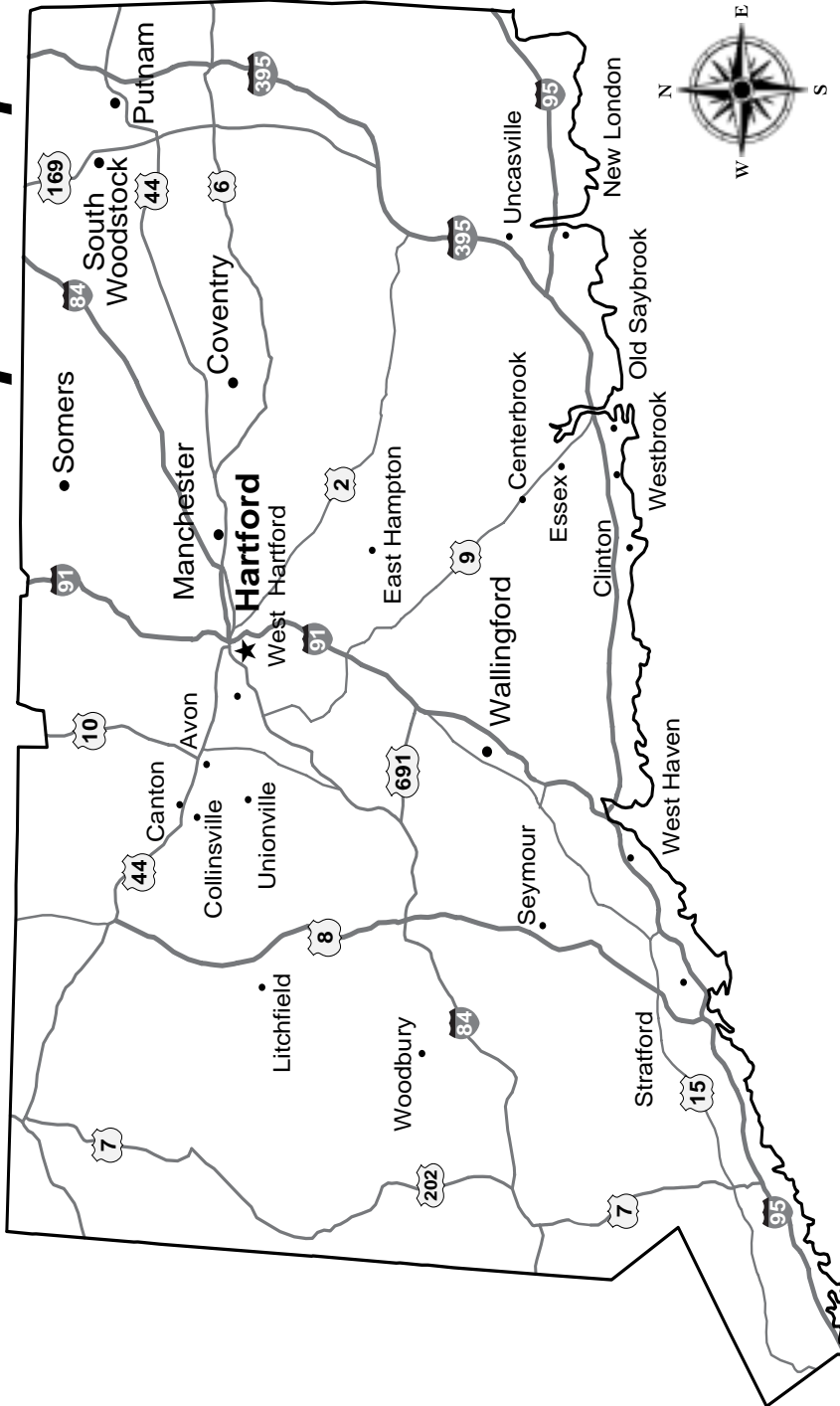
WALTHAM A-U-BS-C-G-R-AG-AP-BP-CT-PP-F-GC-J-M-T-TC

Put Your Shop on the Map.
 Call 413-245-0961

Brickyard Place Antiques & Collectibles
 65 Water Street, Worcester, MA 01604
 Ph. 508-755-4500
 Email: brickyardplace@aol.com
 Hours: Tues - Sun 10 - 4 • Exit 13 of I-290

WORCESTER BS-C-AG-AP-BP-C-PP-F-GC-J-T-TC

Connecticut Antique Shops



ANTIQUÉ SHOPS KEY

SERVICES

- A - Appraisals
- AU - Auction Services
- BS - Buys & Sells Estates
- C - Consignments
- G - Group Shop
- R - Restoration

CATEGORIES

- AG - Architectural & Garden
- AP - Art & Paintings
- BP - Books & Paper
- CT - Country
- FP - Folk/Primitive
- F - Furniture
- GL - General Line
- GC - Glass & China
- J - Jewelry
- M - Military
- T - Textiles
- TC - Toys & Collectibles

Put Your Shop
on the Map.
Call 413-245-0961

Memory Lane Countryside Antique
2224 Boston Tpke., Rt. 44, Coventry, CT 06238
Gail & Gene Dickenson • 860-742-0346
www.memory-lanes.com
Hours: Wed-Sun 10-5

COVENTRY BS-G-R-AG-AP-CT-F-GL-GC-J-T-TC

Memories Too Antiques Center
2208 Boston Tpke., Rt. 44, Coventry, CT 06238
Ann Marie and Bob Rizza • 860-742-2865
www.memory-lanes.com
Hours: Wed-Sun 10-5

COVENTRY BS-G-AP-BP-F-GL-GC-TC

Silk City Antiques and Décor
845 Main Street, Manchester, CT
27 Dealers Offering 3,000 Sq. Ft. of Merchandise
860-533-1263
Hours: Tues-Fri 10-5, Sat 10:30-5, Thurs Till 7
I-384 to Downtown Exit, to Main St.

MANCHESTER BS-G-AP-BP-CT-PP-F-GC-J-M-T-TC

Antiques Marketplace
22,000 Square Feet • Over 300 Dealers
109 Main Street, Putnam, CT 06260
860-928-0442 • www.antiquesmarketplace.com
Hours: 7 Days 10 - 5

PUTNAM G-AG-AP-BP-C-PP-F-GL-GC-T-TC

Antiques Unlimited
Fine Furniture 18th Cent - Early 20th
91 Main Street, Putnam, CT 06260 • 860-963-2599
Hours: Wed-Sun 10 - 5 • www.antiquesunlimited.com
antiquesunlimitedinc@yahoo.com

PUTNAM BS-AP-BP-F-GC-T

Ginger & Pickles
62 South Road (Rt. 83), Somers, CT 06071
860-749-8445
Hours: Tues-Sat 10-5, Sun 11-5

SOMERS A-BS-C-G-AP-BP-C-PP-F-GC-T-TC

McClellan Elms Antiques
8 Stone Bridge Rd, Junctions of Rt 169/171, PO Box 335
South Woodstock, CT • Ph. 860-928-0885
Specializing in Country and Primitive Antique Furniture
and Accessories from the 18th and 19th Centuries.
Hours: Wed-Fri 11-5, Sat 10-5, Sun 12-5

SOUTH WOODSTOCK AP-PP-F-T

Antique Center of Wallingford
28 S. Orchard Street, Wallingford, CT, 06492
Voted #1 Readers Choice Best Antique Shop Record Journal, 2003
203-269-7130 • 203-269-3017
Hours: Thurs-Mon 12-4 & By Appointment
5 Min from I-91 Ex 13 or Parkway Ex 64, Shop & Barn for 45 Years

WALLINGFORD BS-R-AG-AP-F-GL

10 Best Reasons To Use BrimfieldExchange.com and the Brimfield Guide

- FREE** Brimfield Dealer Registration - Antiques & Collectibles
- 22 BRIMFIELD SHOWS** - Opening Times/Maps/Phone Nos.
- 87 SEARCHABLE** Categories of Antiques & Collectibles
- 850 DEALER LISTINGS &** Growing
- 1000's OF CUSTOMERS** Directed to Our Listings via Print and our Website
- REGISTER or RENEW** your Listing Online or by Mail
- SEARCH** Dealer Listings by Name, Show or Category
- BUNDLED ADVERTISING** Available in the Handy Brimfield Pocket Guide and on BrimfieldExchange.com
- ONLINE BIZZ CARDS** Available Year Round on Website to Keep in Touch with Your Customers
- INTERNET ACCESS** Available during Brimfield Week

➡ **REGISTER TODAY!** ⬅

I AM A DEALER IN BRIMFIELD DURING:

MAY JULY SEPT. 2004

New Dealer Update/Renewal Send me Pocket Guide Info

(*)Indicates Required Field

Name* _____ or _____

Business Name* _____

Address* _____

City* _____ State* _____ Zip* _____

Phone* (_____) _____ or FAX (_____) _____

EMAIL if available _____ Website _____

Name of Brimfield Show _____ Booth# _____

Category Specialty (Choose up to Three(3) Categories)* From list on the right

I prefer to renew my dealer listing each year by

Mail Online

1. _____
2. _____
3. _____

MAIL IN THIS REGISTRATION FORM TO:

BrimfieldExchange, 10 Palmer Road, P.O. Box 459, Brimfield, MA 01010

Phone: 413-245-0961 • Email: Admin@BrimfieldExchange.com

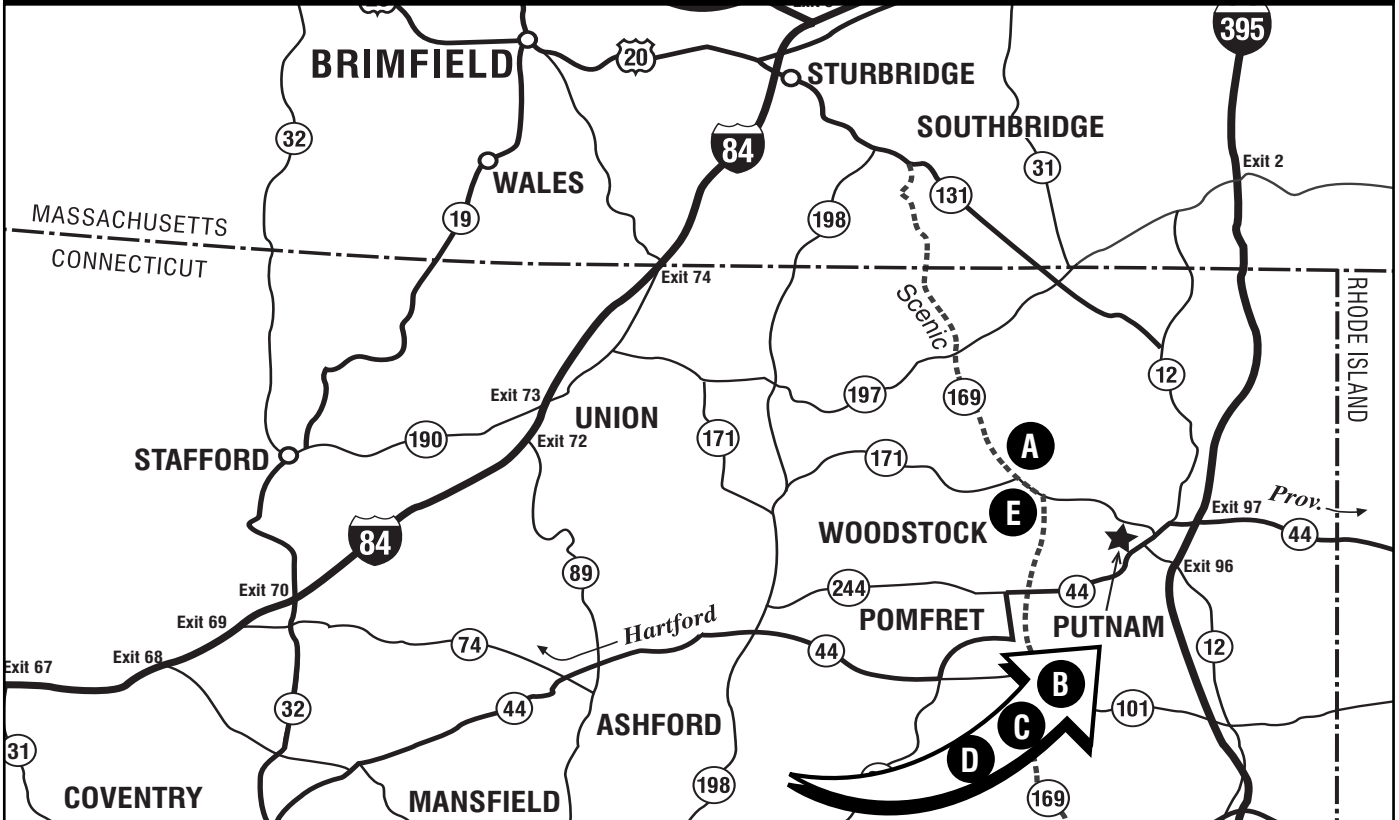
Please note that by mailing in this form for a free listing on the BrimfieldExchange Dealer Directory you agree to the full terms and conditions available at www.BrimfieldExchange.com - or by mailing SASE to BrimfieldExchange.

In addition, BrimfieldExchange reserves the right to edit and/or limit the number of category listings that it prints in the Brimfield Pocket Guide

CATEGORIES

- Advertising & Displays
- African Art
- American Art Pottery
- Americana
- Architectural & Garden
- Art & Paintings
- Art Glass
- Baskets & Woodenware
- Black Americana
- Books & Manuscripts
- Bottles
- Brass-Copper-Bronze
- Breweriana
- Buttons & Smalls
- Cameras
- Cast Iron
- Ceramics
- Children's Items
- Civil War
- Clocks & Watches
- Coin Op & Mechanical
- Coins
- Comic
- Costume Jewelry
- Country
- Deco & Decorative Arts
- Decoys
- Dolls & Accessories
- Eclectic
- Ephemera
- Fiesta & Depression
- Fishing & Sports Related
- Flow Blue & Majolica
- Folk Art
- Furniture
- Furniture Country
- Furniture English/Euro
- Furniture Oak
- Furniture Painted
- Furniture Period
- Furniture Victorian
- General Line
- Games, Toys and Trains
- Glass, China & Crystal
- Guns, Armour & Arms
- Hats & Hat Pins
- Jewelry & Gemstones
- Kitchen Related
- Lamps & Lighting
- Lithographs & Engravings
- Maps
- Marbles
- Marine & Nautical
- Maxfield Parrish
- Medical
- Memorabilia
- Metalware
- Military
- Miscellaneous/Other
- Musical
- Native American
- Optical
- Oriental / Orientalia
- Paper
- Pewter
- Photographica
- Postcards
- Pottery & Porcelain
- Primitives
- Prints & Posters
- Quilts
- Radios & Phonographs
- Rugs-Oriental & Indian
- Scientific Instruments
- Staffordshire
- Steiff & Teddy Bears
- Sterling & Silver Plate
- Stoneware & Yellowware
- Tools & Hardware
- Transportation
- Victorian
- Vintage Clothing
- Vintage Textiles & Linens
- Wallace Nutting
- Western Memorabilia
- Wicker
- Wrought Iron

Visit These Great Antique Shops In Connecticut



A

McClellan Elms Antiques

Scenic Rt. 169/171


Specializing in Room Settings of Americana, Primitives and Country Antiques & Accessories.



We are actively looking to buy furniture and accessories from the 18th & 19th Century.

8 Stone Bridge Road, South Woodstock, CT 06267 • 860-928-0885

B



ANTIQUES UNLIMITED, INC.

Art & Paintings
18th, 19th & 20th Century Furniture

Art and Netta Russo • 91 Main Street • Putnam, CT 06260
860.963.2599 • Fax 860.963.2617

C

ANTIQUES MARKETPLACE

109 Main Street & Rte 44, Putnam, CT 06260

(860) 928-0442 / (800) 514-3448

OPEN 7 DAYS • 10am - 5pm
22,000 SQUARE FEET

★ **Over 300 Dealers** ★
Directions: Exit 97, I-395

Extended Brimfield Hours:
May 8th - 14th - 10AM-6PM
July 2nd - 9th - 10AM-6PM • Sept 3rd - 10th - 10AM-6PM



D

Arts & Framing

Custom Framing
Antique Frames & Restoration Services

Sheri Sochor
112 Main Street, Putnam, CT 06260 • Ph. (860) 963-0105
Wed-Sat 10:00 - 5:00pm Sun. 11:00 - 5:00pm

E

Scranton's Shops

300 Rt 169 • So. Woodstock, CT 06267
7 FULL ROOMS OF ANTIQUES, COLLECTIBLES, CRAFTS, GIFTS
Open Daily 11am - 5pm • (860) 928-3738



Put Your Shop on the Map.
See Pages 18 & 19.

BRIMFIELD

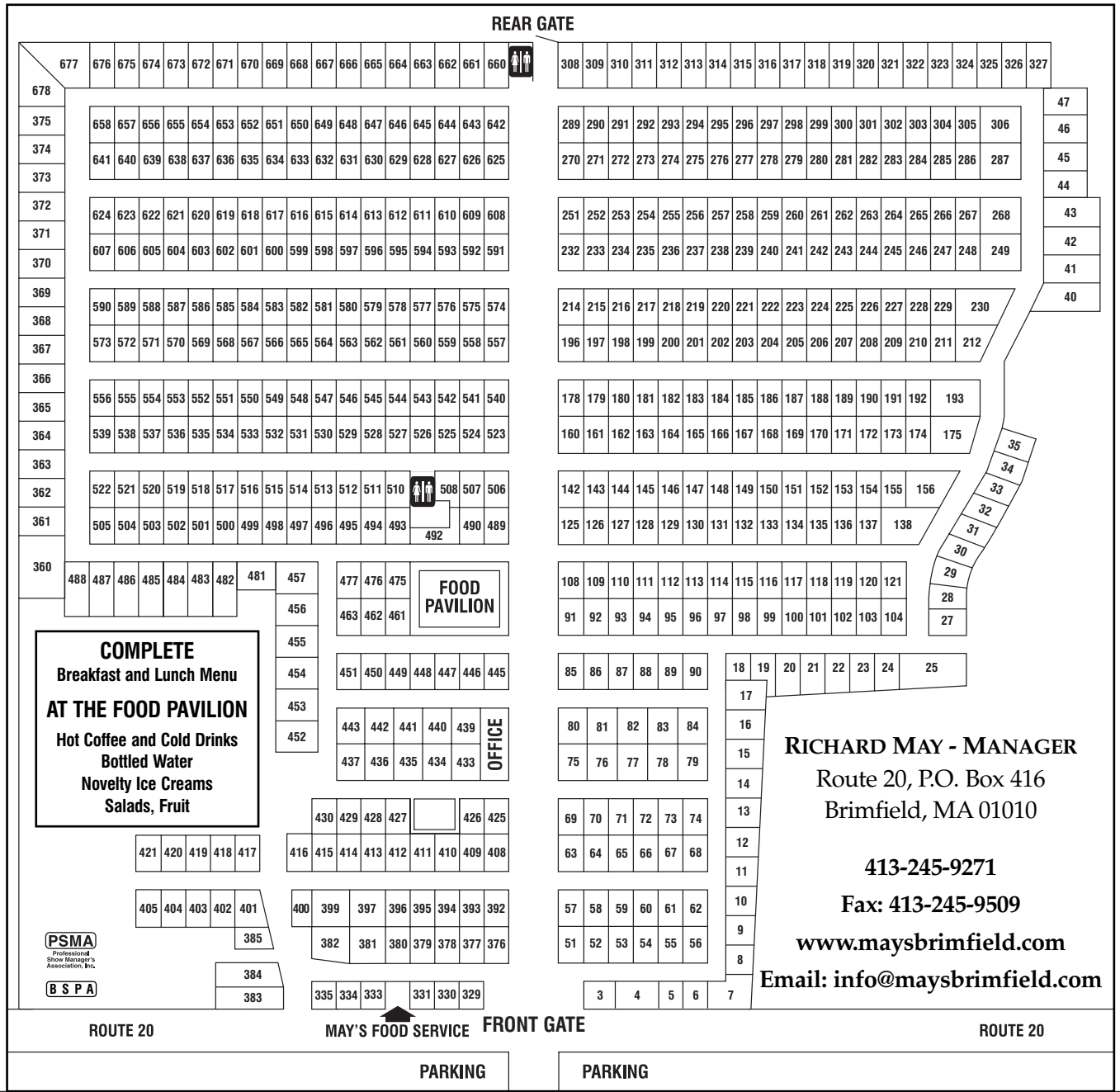
MAY'S ANTIQUE MARKET, INC.

600 Dealers in Antiques and Collectibles Only

2004 SHOW DATES
 MAY 13-15 • JULY 8-10 • SEPTEMBER 9-11

2005 SHOW DATES
 MAY 12-14 • JULY 7-9 • SEPTEMBER 8-10

Opening Thursday 9AM - Admission \$5.00



Flamingo Presents The Finest Shows For 2004!



Two Shows!

The Rhinebeck Tailgate Antiques Shows

An Incredible Success The First Year! * Just 10 Minutes From Rhinebeck!
May 28/29/30 (*Memorial Weekend*) & Oct 8/9/10 (*Columbus Weekend*)
Fri: 3-7/Sat: 8-7/Sun: 11-4 * 100+ Exhibitors * Indoors/Outdoors/Festive Tents
St. James Church, 4526 Albany Post Road (Rt. 9), Hyde Park, NY
General, Country, Americana, Garden, Decorative, Camping/Showers, More!

Two Shows!



Two Shows!

The Southampton Antiques Classics

The Original Hampton's Antiques Classics - Still The Hamptons Finest!
June 26/27 & July 24/25 * Sat: 10-5/Sun: 11-5
100 Exhibitors * Outdoors/Festive Tents * Rain/Shine
Elk's Show Field, 605 Sunrise Hwy (Rt. 27), Southampton, NY
General, Decorative, Art, Garden, Architectural, Camping/Showers, More!

Two Shows!



New Location!

The New England Antiques Festival

The First Show Of Antiques Week In New Hampshire!
August 7/8 * 10-5 Daily * 80 Exhibitors * Completely Indoors
JFK Coliseum (The Ice Rink), 303 Beech Street, Manchester, NH
General, Country, Americana, Decorative, More!

New Location!



New Location!

The Granite State Antiquarian Book & Ephemera Fair

The Only Antiquarian Book & Ephemera Show Of Antiques Week!
August 7/8 * 10-5 * 50 Exhibitors * Completely Indoors!
JFK Coliseum (The Ice Rink), 303 Beech Street, Manchester, NH
Antiquarian Books, Maps, Prints, Ephemera, Appraisals, Presentations, More!

New Location!



New Location!

The Start Of Manchester Antiques Show

The First Formal Show Of Antiques Week In New Hampshire!
August 10/11 * Tues: 10-5/Wed: 11-5 * 50 Exhibitors * Indoors/AC/Walled Displays
The Event Center At C.R. Sparks, 18 Kilton Road, Bedford, NH
Country, Americana, Primitive, Folk, Appraisals, Displays, Presentations, More!

New Location!



New Show!

The Bedford Antiques Show

The New Formal Show Of Antiques Week In New Hampshire!
August 12/13 * Thur: 1-7/Fri: 8-2
50 Exhibitors * *All Different From Start Of Manchester!* * Indoors/AC/Walled Displays
The Event Center At C.R. Sparks, 18 Kilton Road, Bedford, NH
Country, Americana, Primitive, Folk, Appraisals, Displays, Presentations, More!

New Show!



New Date!

The Vermont Antiques Festival

Antiques Week In Vermont! * Height Of Foliage! * 25,000 Customers!
October 2/3 * 10-5 * 400 Exhibitors * In/Outdoors/Festive Tents
Quechee Gorge Village, Route 4, Quechee, VT
Antiques, Collectibles, Steam Train Rides, 1950's Diner, Toy Museum, Camping, More!

New Date!

For Information On These And All Our Fine Shows

Ph: 631.261.4590/Fx: 631.262.1912/E-Mail: flamingoshows@aol.com/Web: www.flamingoshows.com

The Absolute Finest Antiques Shows In The Northeast—And Beyond!



Flamingo Promotions

1.631.261.4590

P.O. Box 57, Northport, NY, 11768

Lodging Available
All Shows!

— Antiques Week In New Hampshire! —

Discover for yourself why
it's eBay made simple —
speak with an eBay
Trading Assistant at
Brimfield this May!

Holly Lane Antiques
Marie Maguire
*Specializing in Antique
And Collectible China*
401-635-4452 (work)
714-669-0940 (cell)
hollyln@sprintmail.com
[accepts consignments]

Kept Treasures, Inc.
Bob Gouveia
978-869-0544 (cell)
kept-treasures@comcast.net
[accepts consignments
& teaches eBay classes]

Levine Consulting
Caroline Levine
978-375-0896 (cell)
cklevine@worldnet.att.net
[accepts consignments]

The Time Capsule
Robert Yeremian
401-781-5017 (work)
401-497-0819 (cell)
ryeremian@aol.com
[accepts consignments
& teaches eBay classes]

Want help Selling on eBay?

If so, a
Trading Assistant
can help you!

- Experienced eBay sellers
- Willing to sell items for you or teach you how to use eBay
- The two of you set all terms
- Trading Assistants are local to you

Thousands of clients
have already hired
a Trading Assistant.

To Learn more, go to:

www.ebay.com/tradingassistants



Trading Assistants are experienced eBay users available to help you sell your items on eBay. Trading Assistants operate their own independent businesses. They are not employees, consultants or independent contractors of eBay Inc. They are not endorsed or approved by eBay. ©2004 eBay Inc. eBay and the eBay logo are trademarks of eBay Inc.